



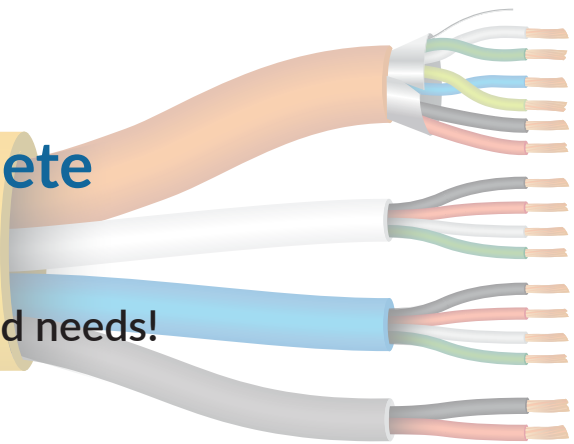
Combo Weigand/OSDP Access Control Cable

The only composite cable you need for today and tomorrow!



Advanced, Secure & Complete

One cable for your OSDP and/or Wiegand needs!



Why OSDP?

Open Supervised Device Protocol (OSDP) is an access control communication standard developed by the Security Industry Association (SIA) to improve interoperability among access control and security products. Greater integration among security systems will enable advanced applications and data encryption.

OSDP is more secure than most common access control protocol as it supports AES-128 encryption (required in federal government applications.) OSDP offers other benefits as well.

Advanced Security

OSDP is more secure than most common access control protocol as it supports AES-128 encryption (required in federal government applications.) This type of security prevents hackers from intercepting data transfers and spoofing a card read. OSDP is also bi-directional which means that your security systems can now continuously monitor for failed, missing,

malfunctioning or tampered readers. OSDP also supports advanced smartcard technology applications, including PKI/FICAM and biometrics.

Best of Both Worlds

The Combo OSDP/Wiegand Cable from Paige allows you to have the right cabling in place for your next OSDP job while still giving you the 6 conductors that you'd need for any Wiegand projects. This gives you the flexibility to standardize on one cable for all your projects whether you are starting fresh with OSDP or helping prepare a legacy system for the future.

Built for Extended Distances

The additional 18 AWG conductors in the reader cable and the 16 AWG conductors in the door lock element allow you to service remote doors from farther away than ever before.



For more information on OSDP check out the SIA website by scanning this QR code.

Part Number	Description	Put Up	Weight
236650707	22/2PR STR CMP LoCap + 18/2 STR CMP OAS- Card Reader	500 ft Reel	33 lbs
236650807	22/4 STR CMP - Contacts 22/4 STR CMP - Rex/Motion 16/2 STR CMP - Lock Power	1,000 ft Reel	66 lbs
222800307	22/1PR STR OAS CMP LoCap / RS485 (for card reader data) 18/2c STR (for card reader power)	1,000 ft Box	25 lbs

World HQ
200 Sheffield St, Suite 302, Mountainside, NJ 07092 USA

Tel: 888.423.8947 cgorders@paigeconnected.com
www.PaigeDataCom.com

