



CX-95S-DH: MAGNETIC DOOR HOLDER

CX-95S-DH Magnetic Door Holders are designed for virtually any remote door release application. The UL-listed Magnetic Door Holder controls the release and closing of commercial and public area doors, ideal for use in apartment buildings, schools, hotels, hospitals, and offices.

Fail-safe operation, tri-volt coils, and an adjustable armature plate allow for easy and flexible installation. Our Magnetic Door Holders may be surface or flush mounted, with all mounting hardware included in the kit. Optional extension bars are also available.



Features

- Multiple voltages: 12/24V, AC/DC, 120 VAC
- Armature plate adjusts to door alignment
- Surface or flush mounting options
- Up to 35 lbs (16 kg) holding force
- Used for door release in public, industrial and commercial applications
- 3" & 7" extension bars available
- 2 year warranty

MODELS

		List Price
CX-95S-DH	Magnetic Door Holder Surface/Flush Mount	\$150.00

EXTENSION BARS

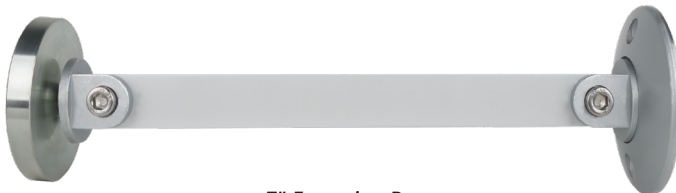
		List Price
CX-95S-3E	3" Magnetic Door Holder Extension Bar	\$24.50
CX-95S-7E	7" Magnetic Door Holder Extension Bar	\$30.00

Specifications

Voltage:	12/24 VDC, 120V AC
Current Draw:	55mA @ 12V AC 57mA @ 12V DC, 32mA @ 24V AC 34mA @ 24V DC, 30mA @ 120V AC
Static Hold Force:	12V AC/DC: Up to 30 lbs. 24V AC/DC: Up to 35 lbs. 120V AC: Up to 18 lbs.
Mount Options:	Surface or Flush Mount
Dimensions:	Surface Mount Magnet: 2-3/4" W x 4-5/8" L x 2-1/2" D (70mm x 116mm x 62 mm) Flush Mount Magnet: 2-3/4" W x 4-5/8" L x 1-3/4" D (70mm x 116mm x 44mm) Armature Plate: 2-9/16" W x 2-9/16" L x 2-7/8" D (65mm x 65mm x 74mm)



3" Extension Bar



7" Extension Bar