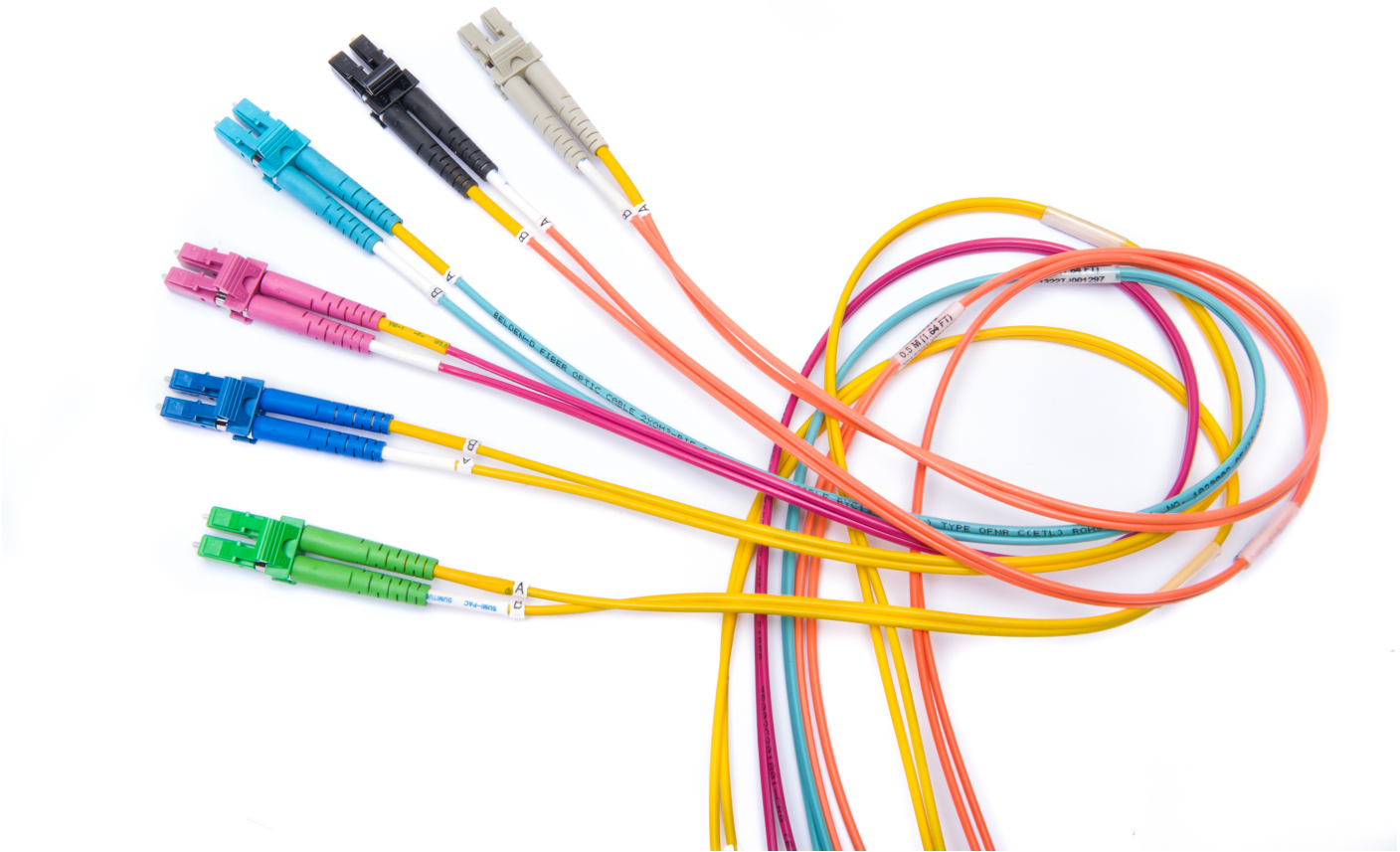


FP1LDLD010M Cable Assemblies - FP - FX PATCH CORD



General Description: FX PATCH CORD, OM1, LC DUPLEX - LC DUPLEX, 10 M, OFNR, DUPLEX ZIP 2.0 MM, A-TO-B, ORANGE JACKET																									
Usage (Overall)																									
Suitable Applications:	Data Centers, Main Equipment Rooms, Telecommunications Rooms and Work Area																								
Related Parts:	FiberExpress Adapter Strips, FiberExpress Manager Modules and FiberExpress Ultra Frames and Cassettes. Workstation Outlets																								
Multi Conductor																									
Physical Characteristics																									
Overall Cabling																									
Overall Cabling Fillers:	Refer to cable Technical Specifications																								
Overall Diameter																									
Overall Nominal Diameter:	0.078 x 0.156 in.																								
Physical Characteristics (Connectivity)																									
Fiber Type																									
Fiber Type:	62.5 Micron (OM1)																								
Materials																									
Materials:																									
<table><tr><th>Description</th><th>Type</th><th>Material</th><th>Color</th></tr><tr><td>Connectors for both ends</td><td>LC-DUPLEX</td><td>Plastic</td><td>Beige</td></tr><tr><td>Boots for both ends</td><td></td><td>Rubber</td><td>Beige</td></tr><tr><td>Ferrules for both ends</td><td>1.25mm</td><td>Zirconia-Ceramic</td><td></td></tr></table>	Description	Type	Material	Color	Connectors for both ends	LC-DUPLEX	Plastic	Beige	Boots for both ends		Rubber	Beige	Ferrules for both ends	1.25mm	Zirconia-Ceramic										
Description	Type	Material	Color																						
Connectors for both ends	LC-DUPLEX	Plastic	Beige																						
Boots for both ends		Rubber	Beige																						
Ferrules for both ends	1.25mm	Zirconia-Ceramic																							
Wiring Scheme																									
Wiring Scheme:	TIA/EIA 568-C.3																								
Weight																									
Weight:	0.178 lbs.																								
Packaging																									
Packaging:	Individually packaged.																								
Mechanical Characteristics (Connectivity)																									
Storage Temperature Range:																									
	-40°C To +75°C																								
Operating Temperature Range:																									
	-40°C To +75°C																								
Environmental/Mechanical Characteristics:																									
<table><tr><th>Test (Method)</th><th>TIA 568-D.3</th><th>Belden</th></tr><tr><td>Thermal Cycling (FOTP-3)</td><td>n/a</td><td>-40 to 75°C cycling for 7 days</td></tr><tr><td>Temperature Life (FOTP-4)</td><td>60°C for 4 days</td><td>85°C for 7 days</td></tr><tr><td>Humidity (FOTP-5)</td><td>90-95% at 40°C for 4 days</td><td>95% @ 75°C for 7 days</td></tr><tr><td>Durability (FOTP-21)</td><td>500 cycles</td><td>6 x 200 cycles (3 Elevations)</td></tr><tr><td>Cable Retention (FOTP-6)</td><td>5.0 kg @ 0 deg.</td><td>1.94 kg @ 90 deg.</td></tr><tr><td>Flex (FOTP-1)</td><td>0.5 kg @ 90° to -90° for 100 cycles</td><td>0.9 kg @ 90° to -90° for 100 cycles</td></tr><tr><td>Twist (FOTP-36)</td><td>1.5 kg for 10 cycles</td><td>1.5 kg for 10 cycles</td></tr></table>	Test (Method)	TIA 568-D.3	Belden	Thermal Cycling (FOTP-3)	n/a	-40 to 75°C cycling for 7 days	Temperature Life (FOTP-4)	60°C for 4 days	85°C for 7 days	Humidity (FOTP-5)	90-95% at 40°C for 4 days	95% @ 75°C for 7 days	Durability (FOTP-21)	500 cycles	6 x 200 cycles (3 Elevations)	Cable Retention (FOTP-6)	5.0 kg @ 0 deg.	1.94 kg @ 90 deg.	Flex (FOTP-1)	0.5 kg @ 90° to -90° for 100 cycles	0.9 kg @ 90° to -90° for 100 cycles	Twist (FOTP-36)	1.5 kg for 10 cycles	1.5 kg for 10 cycles	
Test (Method)	TIA 568-D.3	Belden																							
Thermal Cycling (FOTP-3)	n/a	-40 to 75°C cycling for 7 days																							
Temperature Life (FOTP-4)	60°C for 4 days	85°C for 7 days																							
Humidity (FOTP-5)	90-95% at 40°C for 4 days	95% @ 75°C for 7 days																							
Durability (FOTP-21)	500 cycles	6 x 200 cycles (3 Elevations)																							
Cable Retention (FOTP-6)	5.0 kg @ 0 deg.	1.94 kg @ 90 deg.																							
Flex (FOTP-1)	0.5 kg @ 90° to -90° for 100 cycles	0.9 kg @ 90° to -90° for 100 cycles																							
Twist (FOTP-36)	1.5 kg for 10 cycles	1.5 kg for 10 cycles																							
Overall Length Tolerances:																									
<table><tr><th>Range</th><th>Tolerance</th><th>Range</th><th>Tolerance</th><th>Range</th><th>Tolerance</th></tr><tr><td>Sx & Dx Patchcord</td><td>Sx & Dx Patchcord</td><td>MPO Trunk</td><td>MPO Trunk</td><td>Multi-Fiber Cable Assembly</td><td>Multi-Fiber Cable Assembly</td></tr></table>	Range	Tolerance	Range	Tolerance	Range	Tolerance	Sx & Dx Patchcord	Sx & Dx Patchcord	MPO Trunk	MPO Trunk	Multi-Fiber Cable Assembly	Multi-Fiber Cable Assembly													
Range	Tolerance	Range	Tolerance	Range	Tolerance																				
Sx & Dx Patchcord	Sx & Dx Patchcord	MPO Trunk	MPO Trunk	Multi-Fiber Cable Assembly	Multi-Fiber Cable Assembly																				



FP1LDLD010M Cable Assemblies - FP - FX PATCH CORD

For more
information
please call
1-800-Belden1

[Redacted content]



FP1LDLD010M Cable Assemblies - FP - FX PATCH CORD

0 to 2 meters	+0.2 / -0 meter	0 to 2 meters	+0.2 / -0 meter	0 to 2 meters	+0.2 / -0 meter
2.1 to 5.0 meters	+0.3 / -0 meter	2.1 to 5.0 meters	+0.3 / -0 meter	2.1 to 5.0 meters	+0.3 / -0 meter
5.1 to 40 meters	+0.4 / -0 meter	5.1 to 20 meters	+0.4 / -0 meter	5.1 to 20 meters	+0.4 / -0 meter
Over 40.1 meters	+ 1.0% / -0%	Over 20.1 meters	+ 1.0% / -0%	Over 20.1 meters	+ 1.3 / -0 meter

Applicable Specifications and Agency Compliance (Overall)

Applicable Standards & Environmental Programs

UL Rating:	Riser
EU Directive 2011/65/EU (ROHS II):	Yes
EU RoHS Compliance Date (mm/dd/yyyy):	01/01/2013
Mil Order #39 (China RoHS):	EUP 50
Safety Listing:	ACA, Bi-national Standard Listed
Suitability	
Suitability - Indoor:	Yes

Transmission Characteristics (Connectivity)

Optical Connector Performance:

Description	OM1 (62.5 μm)	OM2 (50 μm)	OM3 (50 μm)	OM4 (50 μm)	OS2 (Singlemode) UPC	OS2 (Singlemode) APC
Maximum IL (dB) SingleFiber Connector LC - SC - ST	0.25 dB	0.25 dB	0.25 dB	0.15 dB	0.35 dB	0.35 dB
Typical RL (dB) SingleFiber connector LC - SC - ST	-30 dB	-30 dB	-30 dB	-30 dB	-55 dB	-65 dB
Maximum IL (dB) MultiFiber Connector MPO	0.5 dB	0.5 dB	0.35 dB	0.2 dB	-	0.75 dB
Typical RL (dB) MultiFiber Connector MPO	-30 dB	-30 dB	-30 dB	-30 dB	-	-60 dB

Electrical Characteristics (Overall)

Notes (Overall)

Product Family

Put Ups and Colors:

Item #	Putup	Ship Weight	Color	Notes	Item Desc
FP1LDLD010M	1 EA	0.081 KG			FXPC OM1 LC_DX LC_DX 10M

Revision Number: 0 Revision Date: 03-30-2015

© 2017 Belden, Inc
All Rights Reserved.

Although Belden makes every reasonable effort to ensure their accuracy at the time of this publication, information and specifications described herein are subject to error or omission and to change without notice, and the listing of such information and specifications does not ensure product availability.
Belden provides the information and specifications herein on an "AS IS" basis, with no representations or warranties, whether express, statutory or implied. In no event will Belden be liable for any damages (including consequential, indirect, incidental, special, punitive, or exemplary damages) whatsoever, even if Belden has been advised of the possibility of such damages, whether in an action under contract, negligence or any other theory, arising out of or in connection with the use, or inability to use, the information or specifications described herein.
All sales of Belden products are subject to Belden's standard terms and conditions of sale.