

Overview

These ProWire Unified Power wall mount models are single and dual voltage access power systems, precision wired for Mercury controllers. ProWire enables the specification and installation of **standardized access power equipment** across an enterprise for uniform operation, maintenance and servicing.

The C4 or M8 control modules provide access control inputs capable of voltage or dry contact activation, and outputs programmable for failsafe / failsecure operation at either 12 or 24 VDC and controlled by the power supply fire alarm interface. The D8 modules provide auxiliary outputs. In dual voltage systems, each output is configurable for 12 or 24VDC operation.

ProWire Unified Power enclosures are painted steel with removable backplate, lock, keys and and tamper switch and come 100% factory tested – ready for final panel installation and field wire termination.

Product Features

- Guarantees uniform installations across an enterprise
- Pre-installed wire harness for panel power, lock control, faults and tamper switch
- Point to point wiring; labeled, color coded, twisted pair, shielded communication
- Tie wrap cable management
- Managed systems monitor power, batteries and eight outputs
- UL294, ULC S319 joint LSP / Mercury integrated listing

Enclosure Styles



Model Nomenclature

Power Supplies

FP075-B100

Power rating
FP075 2A/24V 50W lock power
B100 2A/12V 25W system power

Accessory Boards & Enclosure

C4 D8P E4M

Enclosure

Accessories
 C4, D8, M8 (fused)
 C4P, D8P, M8P (ptc)

Wiring Option

T4-A

T Tie Wrap 4DR
A MR52 / EP1502
B MR52 / EP2500
C ALL MR52

*Base Model Number	Tie Wrap Wiring			System Type	Distributed Outputs	Enclosure / Cable Mgmt
	T4-A	T4-B	T4-C			

Dual voltage - 2A/12V and 2A/24V

FP075 – B100C4D8PE2M /	T4-A	T4-B	T4-C	Standard	8 auxiliary, 4 lock control	E2M 20 x 16 x 4.5 Tie Wrap
FP075 – B100M8PNL4E2M /	T4-A	T4-B	T4-C	Networked	8 managed	
FP075 – B100C4D8PE4M /	T4-A	T4-B	T4-C	Standard	8 auxiliary, 4 lock control	E4M 24 x 20 x 4.5 Tie Wrap
FP075 – B100M8PNL4E4M /	T4-A	T4-B	T4-C	Networked	8 managed	

Single voltage - 6A/12V (3A/24V)

FP075 – C4D8PE2M /	T4-A	T4-B	T4-C	Standard	8 auxiliary, 4 lock control	E2M 20 x 16 x 4.5 Tie Wrap
FP075 – M8PNL4E2M /	T4-A	T4-B	T4-C	Networked	8 managed	
FP075 – C4D8PE4M /	T4-A	T4-B	T4-C	Standard	8 auxiliary, 4 lock control	E4M 24 x 20 x 4.5 Tie Wrap
FP075 – M8PNL4E4M /	T4-A	T4-B	T4-C	Networked	8 managed	

**Complete model number requires base and wiring suffix, i.e. FP075-B100C4D8PE2M / T4-A*

System Specifications

Power Supplies	FP075	Power supply board, 2A/24V
	B100	Secondard voltage module, 2A/12V class 2 power limited Input 120/230VAC 50/60Hz 83 Watts (0.69A) Overload and short circuit protection Over temperature protection Polarized AC power supply disconnect
Battery Charging		Independent built-in charger for sealed lead-acid or gel type batteries Microprocessor dual rate charging of 12 or 24V battery sets Automatic switchover to standby battery when AC fails Zero voltage drop when switched over to battery backup
Supervision		AC Fault (form "C" contacts) System Fault (form "C" contacts) System Fault conditions: Low or no battery short to earth ground power supply failure
Distribution Modules	D8P	8 auxiliary outputs, class 2 power limited at 2.5A per output
	C8	8 relay lock control outputs, fused at 3A per output
	M8	8 relay managed outputs, fused at 3A per output
Network Management	NL4	Four port module. Monitors and reports power supply status. Tests and reports battery health status.
	M8	Monitors eight (8) individual outputs. Remote reset each output. Set window thresholds for voltage & current.
Enclosures	E2M	Size: 20.00H x 16.00W x 4.50D in. (51.00 x 41.00 x 11.50 cm) Weight: 20 lbs.
	E4M	Size: 24.00H x 20.00W x 4.50D in. (61.00 x 50.00 x 11.50 cm) Weight: 25 lbs.
Wiring Suffix	T4-A	T = Tie Wrap 4 = Door count A = MR52 / EP1502
	T4-B	T = Tie Wrap 4 = Door count B = MR52 / EP2500
	T4-C	T = Tie Wrap 4 = Door count C = All MR52s
Regulatory Compliance	UL / ULC	UL294, ULC S319
	CSA / FCC	CSA C22.2 #107.1 FCC Part 15, CSFM



Board Locations / Wiring Examples

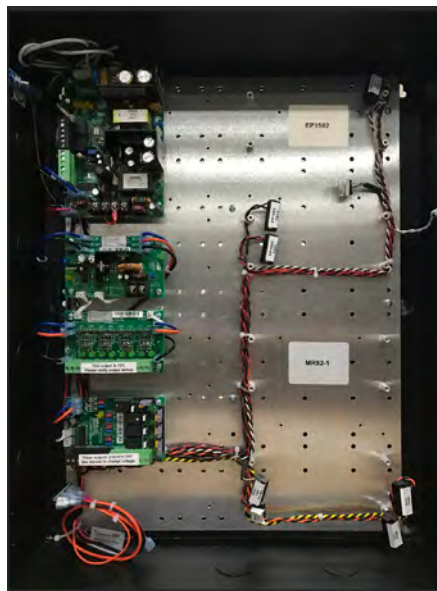


E2M



E4M

Tie wrap - E2M



LifeSafety Power, Inc.
750 Tower Road, Unit B
Mundelein, IL 60060 USA
(888) 577-2898
info@lifesafetypower.com

LifeSafety Power warrants to the original purchaser only that all products will be free from defects in material or workmanship at time of shipment. This warranty is non-transferable. Our obligation under this warranty is limited to repair or replacement, at the sole discretion of LifeSafety Power, of products that are defective in material or workmanship at the time of shipment provided they were used within the specified ratings and installed in accordance with accepted engineering practices. Products in the Unified Wired Systems Classification will be wired to the LifeSafety Power description of operation unless otherwise stated. At the time of installation it is the obligation of the purchaser or final installer to verify that all wired terminations provide the desired operation. In no event shall LifeSafety Power be responsible for any special, incidental or consequential damages even if LifeSafety Power has been advised of the possibility of such damages. Customer hereby agrees to indemnify LifeSafety Power for and hold LifeSafety Power harmless from and against any and all loss, cost or expense (including reasonable attorneys' fees) directly or indirectly related to any claim with respect to Unified Wired™ systems classification products except to the extent any such claim shall result from the gross negligence or willful misconduct of LifeSafety Power.