

2



1

THIS COPY IS PROVIDED ON A RESTRICTED BASIS AND IS NOT TO BE USED IN ANY WAY DETRIMENTAL TO THE INTERESTS OF PANDUIT CORP.

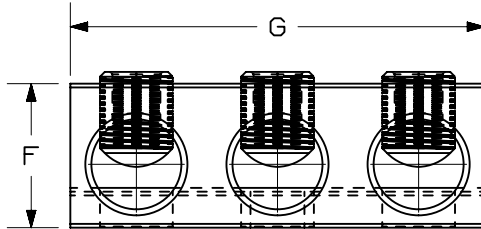
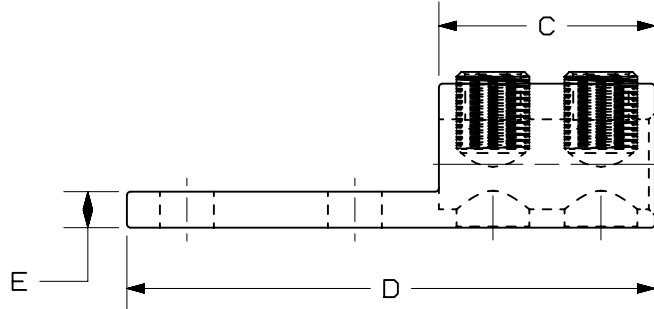
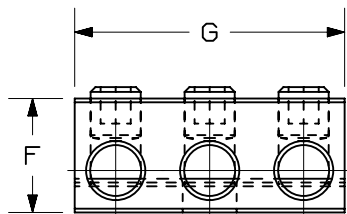
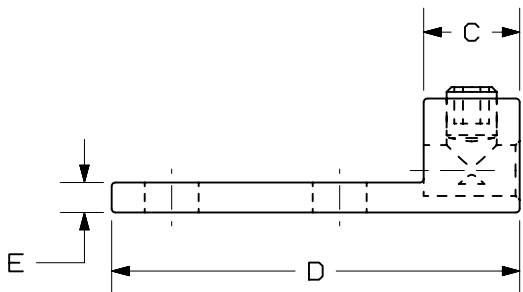
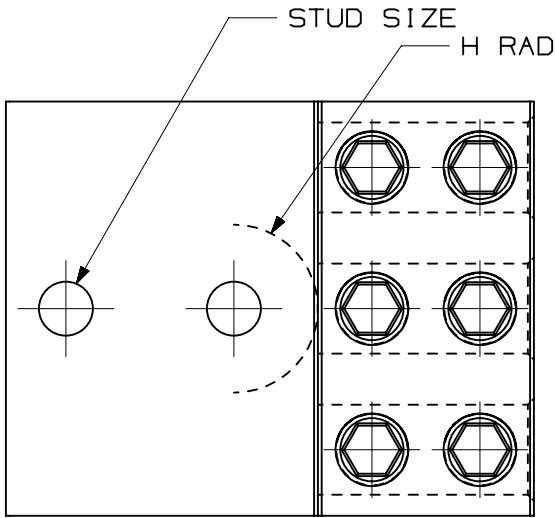
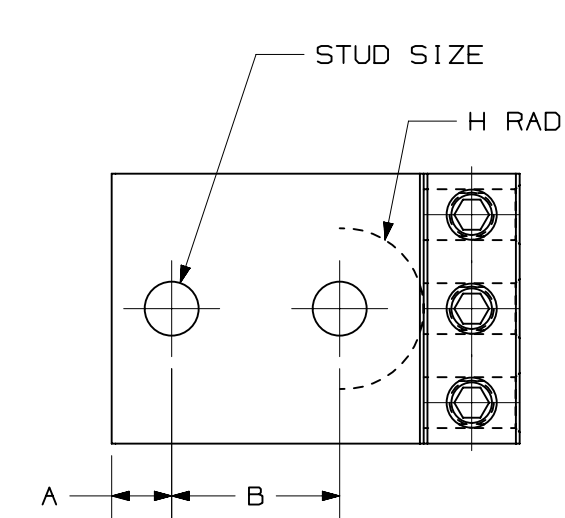


FIGURE 1

FIGURE 2

NOTES:

1. MATERIAL:  
BODY - ALUMINUM, TIN PLATED  
SCREW - ALUMINUM, TIN PLATED
2. UL LISTED & CSA CERTIFIED FOR USE UP TO 600V & TEMPERATURE RATED 90°C (AL9CU)
3. DUAL RATED FOR USE WITH COPPER OR ALUMINUM STRANDED CODE CONDUCTOR
4. PARTS ARE RoHS COMPLIANT
5. USE OF OXIDE INHIBITING JOINT COMPOUND SUCH AS PANDUIT CMP-100-1 RECOMMENDED FOR PAD TO PAD AND CONDUCTOR SURFACES.
6. SEE INSTRUCTION SHEET T-PMPI-223-PC FOR TIGHTENING TORQUE INFORMATION.
7. SEE PANDUIT.COM FOR PACKAGING QUANTITIES
8. \*\*DENOTES NEMA HOLE SPACING.



PART NUMBER	WIRE RANGE	FIGURE	STUD SIZE	*HEX KEY	DIMENSIONS - IN [ mm ] ±.02 [ 0.5 ]							
					A	B	C	D	E	F	G	H
LAM3B2-14-6Y	2 -14 AWG	1	5/16	SLOTTED	.34 [ 8.6 ]	.88 [ 22.2 ]	.50 [ 12.7 ]	2.19 [ 55.5 ]	.19 [ 4.7 ]	.63 [ 15.9 ]	1.625 [ 41.3 ]	.47 [ 12.0 ]
LAM3B1/0-38-6Y	1/0 -14 AWG		3/8	SLOTTED	.34 [ 8.6 ]	1.00 [ 25.4 ]	.75 [ 19.1 ]	2.91 [ 73.9 ]	.25 [ 6.4 ]	.88 [ 22.4 ]	2.00 [ 50.8 ]	.81 [ 20.6 ]
LAM3B3/0-12-3Y	3/0 - 6 AWG		1/4		.63 [ 16.0 ]	**1.75 [ 44.5 ]	1.00 [ 25.4 ]	4.25 [ 108.0 ]	.31 [ 7.9 ]	1.19 [ 30.1 ]	2.81 [ 71.4 ]	.88 [ 22.2 ]
LAM3B250-12-1Y	250kcmil - 6 AWG	2	1/2	5/16	.63 [ 16.0 ]	**1.75 [ 44.5 ]	1.00 [ 25.4 ]	4.00 [ 101.6 ]	.31 [ 7.9 ]	1.19 [ 30.1 ]	2.82 [ 71.6 ]	.63 [ 16.0 ]
LAM3B350-12-1Y	350kcmil - 6 AWG			5/16	.63 [ 16.0 ]	**1.75 [ 44.5 ]	1.25 [ 31.8 ]	4.50 [ 114.3 ]	.31 [ 7.9 ]	1.38 [ 35.1 ]	3.50 [ 88.9 ]	.88 [ 22.2 ]
LAM3LB600-12-1	600kcmil - 2 AWG			3/8	.63 [ 16.0 ]	**1.75 [ 44.5 ]	2.25 [ 57.2 ]	5.50 [ 139.7 ]	.38 [ 9.7 ]	1.50 [ 38.1 ]	4.32 [ 109.7 ]	.88 [ 22.2 ]
LAM3LB1000-121Y	1000 - 500kcmil			1/2	.63 [ 16.0 ]	**1.75 [ 44.5 ]	2.75 [ 69.9 ]	6.19 [ 157.2 ]	.56 [ 14.2 ]	1.88 [ 47.8 ]	5.27 [ 133.9 ]	1.06 [ 26.9 ]

\* HEX SIZE MAY DIFFER FROM CHART. DIFFERENCE IN SIZE WILL NOT AFFECT FIT, FORM, OR FUNCTION OF PART

08A	2-29-24	JHNU	JHNU	MRWA	C. REVISED DRAWING NUMBER: N41561BA-DC WAS C41561 B. REVISED DIMENSIONS FOR LAM3B1/0-14 A. CONVERTED TO NX	003311
REV	DATE	BY	CHK	APR	DESCRIPTION	ECN

PART NUMBER		SEE TABLE	
TITLE			
LAM3B, LAM3LB SERIES ALUMINUM MECHANICAL LUGS			
CUSTOMER DRAWING			
ITEM REVISION NAME		003311/00	
DATASET FILE NAME		N41561BA-DC/08A	
		THIRD ANGLE PROJECTION	
MATERIAL		SEE NOTES	
DRAWN BY		JHNU	
DATE		2-06	
CHK		ENG	
SCALE		NONE	
DRAWING NUMBER		003311-DC	
SHEET 1 OF 1		B	