

D

C

B

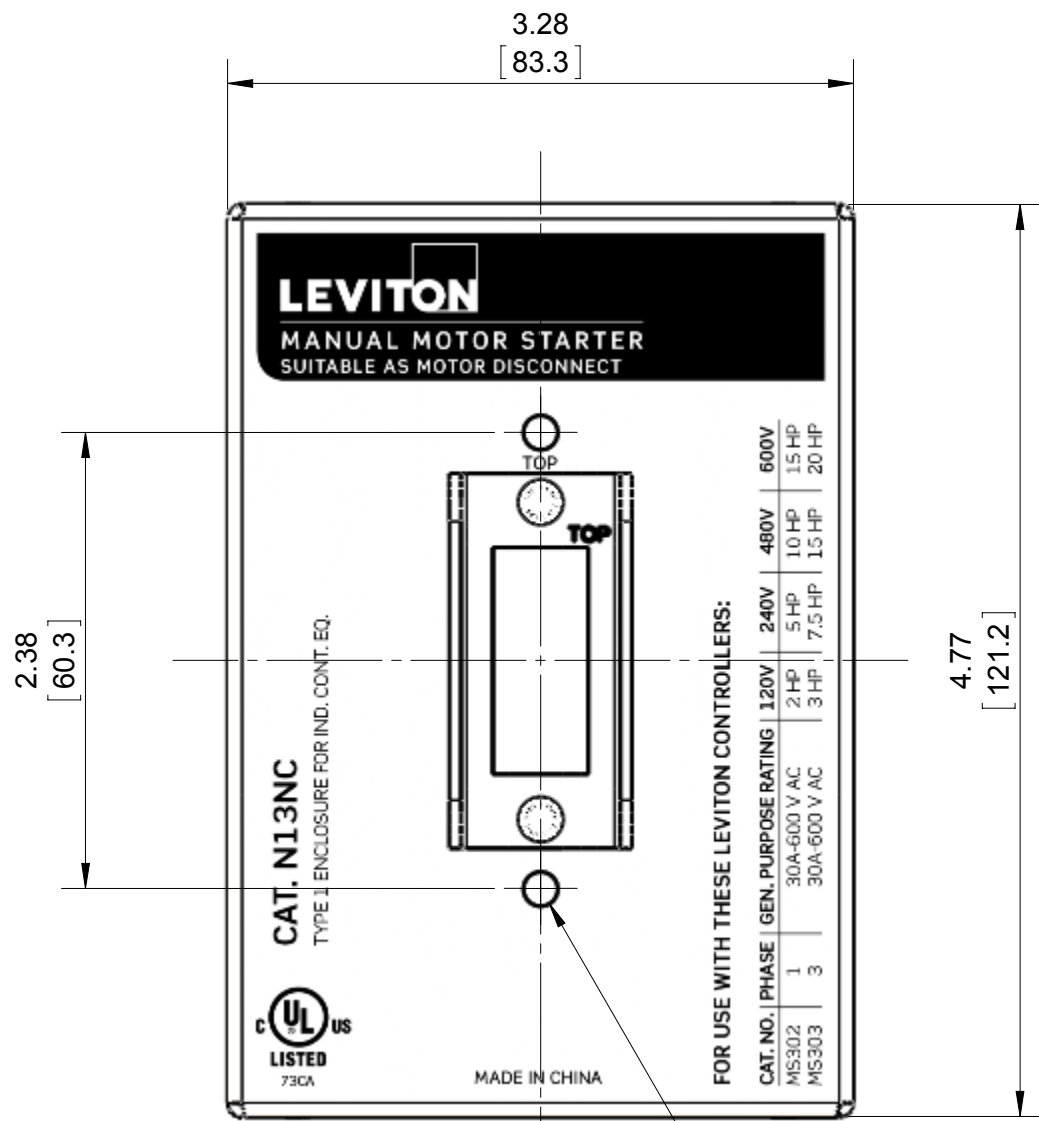
A

D

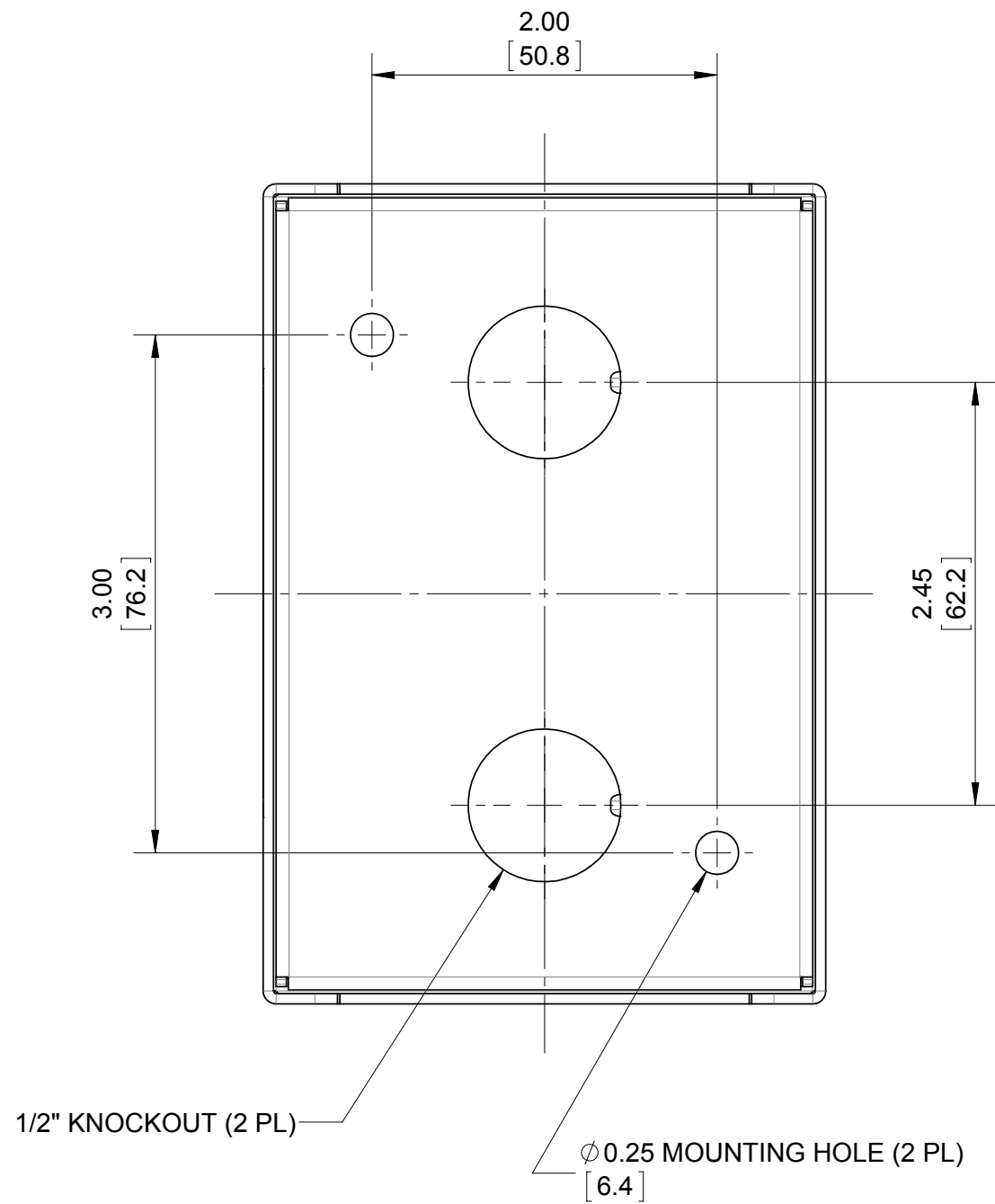
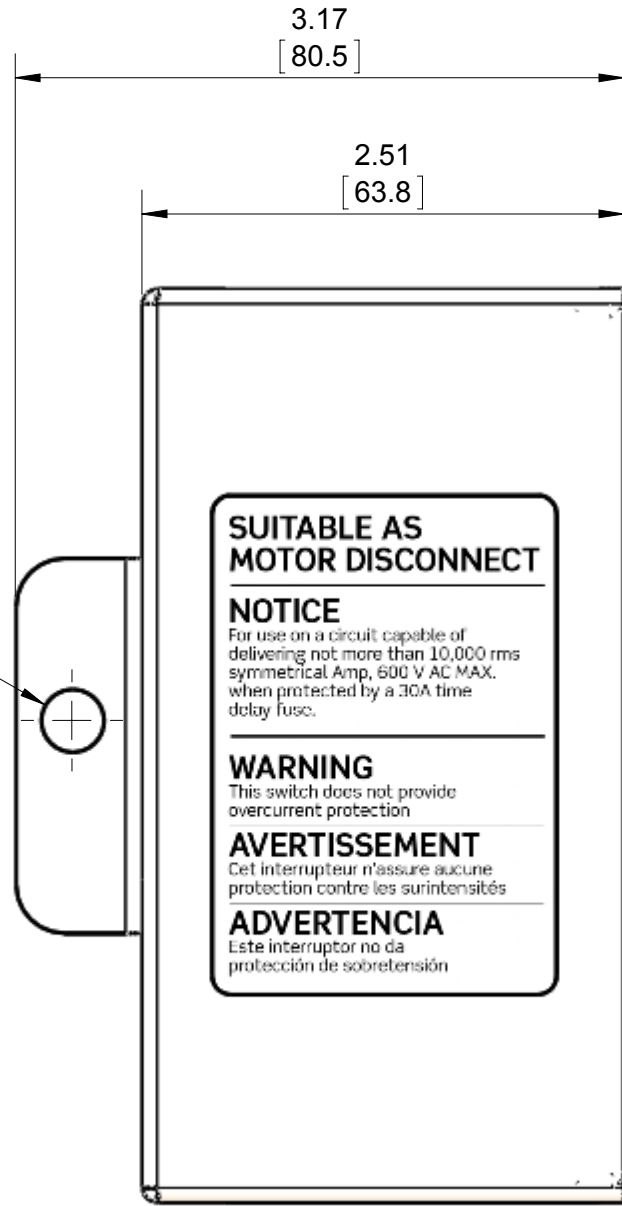
C

B

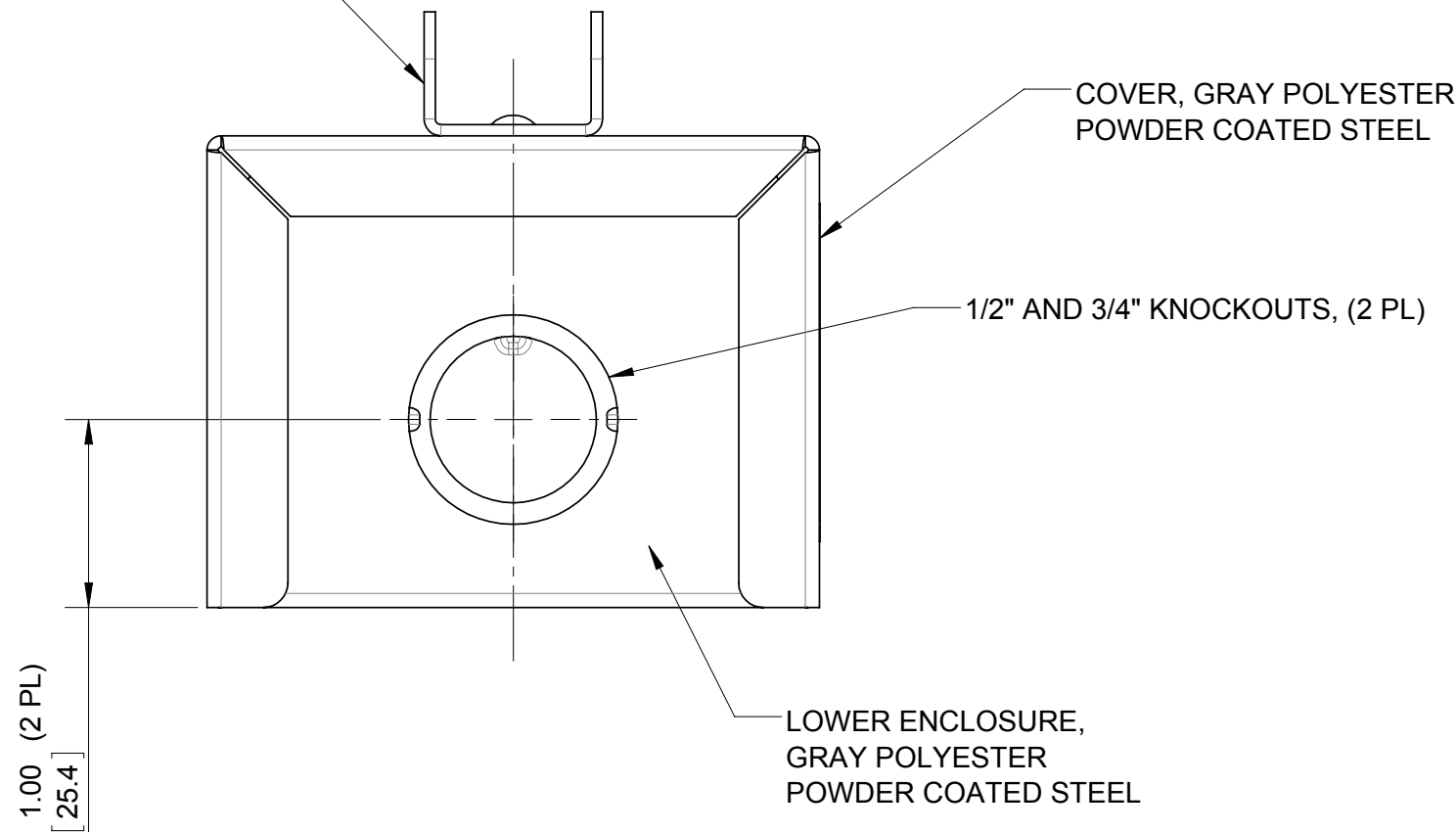
A



Ø 0.33 HOLE (2 PL)
[8.3]



BRACKET, ZINC PLATED STEEL



COVER, GRAY POLYESTER
POWDER COATED STEEL

1/2" AND 3/4" KNOCKOUTS, (2 PL)

LOWER ENCLOSURE,
GRAY POLYESTER
POWDER COATED STEEL

NOTES:

- UPPER DIMENSIONS ARE IN INCHES.
LOWER DIMENSIONS ARE IN MILLIMETERS.

TYPE 1 METAL ENCLOSURE CATALOG NUMBERS

| CATALOG NUMBER | DESCRIPTION |
|-----------------|-------------------------------------------------------------------|
| CAT. #N13NC-0DS | TYPE 1 METAL ENCLOSURE FOR 30A MOTOR STARTER SWITCH |
| CAT. #N1302-0DS | TYPE 1 METAL ENCLOSURE WITH 30A 2-POLE (1 Ø) MOTOR STARTER SWITCH |
| CAT. #N1303-0DS | TYPE 1 METAL ENCLOSURE WITH 30A 3-POLE (3 Ø) MOTOR STARTER SWITCH |

STATUS: Production Release

| REV. | DATE | ECO NUMBER | CHGD | APVD |
|------|------------|-------------|------|------|
| A | 02/28/2017 | NEW RELEASE | PE1 | JD |
| - | - | - | - | - |
| - | - | - | - | - |
| - | - | - | - | - |
| - | - | - | - | - |

LEVITON
The information in this document is the exclusive **PROPRIETARY** property of **LEVITON MFG. CO., INC.** It is disclosed with the understanding that acceptance or review by the recipient constitutes an undertaking by the recipient: (1) to hold this information in strict confidence. (2) not to disclose, duplicate, copy, or use the information, in whole or in part, for any purpose other than that for which disclosed.
Copyright 2016. Unpublished. All Rights Reserved.

UNLESS OTHERWISE SPECIFIED: DO NOT SCALE DRAWING. ALL DIMENSIONS ARE IN INCHES. ALL ANGLES ARE IN DEGREES.

| TOLERANCES | |
|-------------------------------------|-------------------------------------|
| INCH .XX ± .01 .XXX ± .005 | METRIC .X ± .2 mm .XX ± .1 mm |
| ANGLES: ± 1/2° | |
| THIRD ANGLE PROJECTION | |
| ALL PRINTED COPIES ARE UNCONTROLLED | |

TITLE: **TYPE 1 ENCLOSURE FOR 30A MMS SWITCH**

| | | | | | |
|--------|-----|------------|-------|----|------------|
| DWN BY | PE1 | 05/20/2015 | ENGRG | JD | 02/28/2017 |
| CHK BY | JD | 02/28/2017 | MFG | JD | 02/28/2017 |

DWG NO. **CATSTD-N13NC-0DS-D01**

| | | | |
|------|-------------|--------------|-----|
| SIZE | PROJECT NO. | PROJ-03088 | REV |
| C | SCALE:1:1 | SHEET 1 OF 1 | A |