



# AMAG Integration Plugin for **Wisenet WAVE VMS** Installation and Setup Guide

Symmetry Professional

×



**SYMMETRY**  
*Professional*

New Alarms	9
Total Alarms	9
Highest Priority	40

User Name:  
Password:

INSTALLER

# AMAG Integration Plugin for Wisenet WAVE VMS

## Installation and Setup Guide

### Plugin Overview

The AMAG Integration Plugin for Wisenet WAVE VMS integrates your Wisenet WAVE video management system into AMAG Technology's Symmetry Access Control software. This integration allows for the assignment of video cameras registered within Wisenet WAVE VMS to mapped resources in AMAG Technology's Symmetry Access Control software (access card readers, etc.) which can then be viewed in the Symmetry interface. This plugin also allows the viewing of Wisenet WAVE VMS generated events, both video and system, to be viewed through Symmetry Access Control.

### Specifications and Requirements

#### AMAG Symmetry Access Control

- Version 9.3.58 or higher
- Appropriate Symmetry camera licensing

#### Wisenet WAVE VMS

- Version 5.0.0.35745 or higher

### Table of Contents

<b>Section 1: Preparing Wisenet WAVE VMS for integration into Symmetry .....</b>	<b>2</b>
Creating a New User for your Symmetry Integration .....	2
Configuring Camera Events in Wisenet WAVE VMS for Use with Symmetry .....	6
Plugin Licensing .....	8
<b>Section 2: Adding your Wisenet WAVE system to Symmetry Access Control software .....</b>	<b>9</b>
Installing the AMAG Integration Plugin for Wisenet WAVE VMS .....	9
Adding a Wisenet WAVE Server to Symmetry Access Control Center .....	11
Wisenet WAVE Server Cameras: Camera Configuration and Event Reporting .....	13
Configuring Camera Event Reporting .....	13
Configuring PTZ Camera Presets and Tours .....	14
Plugin Limitations .....	16

## Section 1: Preparing Wisenet WAVE VMS for integration into Symmetry

There are two important steps that must be taken to prepare a Wisenet WAVE system for integration into your Symmetry Access Control Software:

- 1 The creation and configuration of a user account will allow Symmetry to access cameras registered to a Wisenet WAVE system
- 2 The configuration of camera events used to communicate with Symmetry

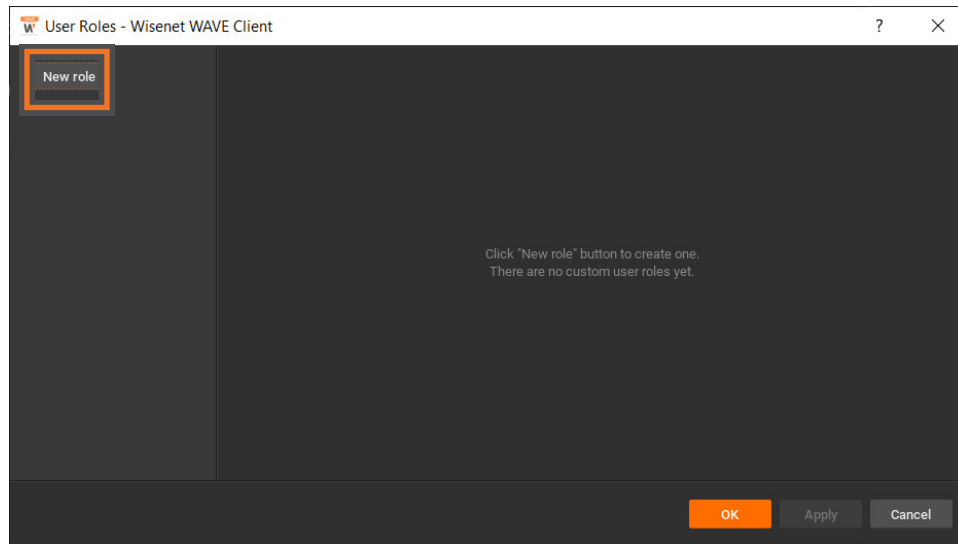
### Creating a New User for your Symmetry Integration

In order for Symmetry to access cameras registered to your Wisenet WAVE system, a new user and user role will need to be created. This step will also allow you to choose which cameras within your Wisenet WAVE system will be used with your Symmetry integration.

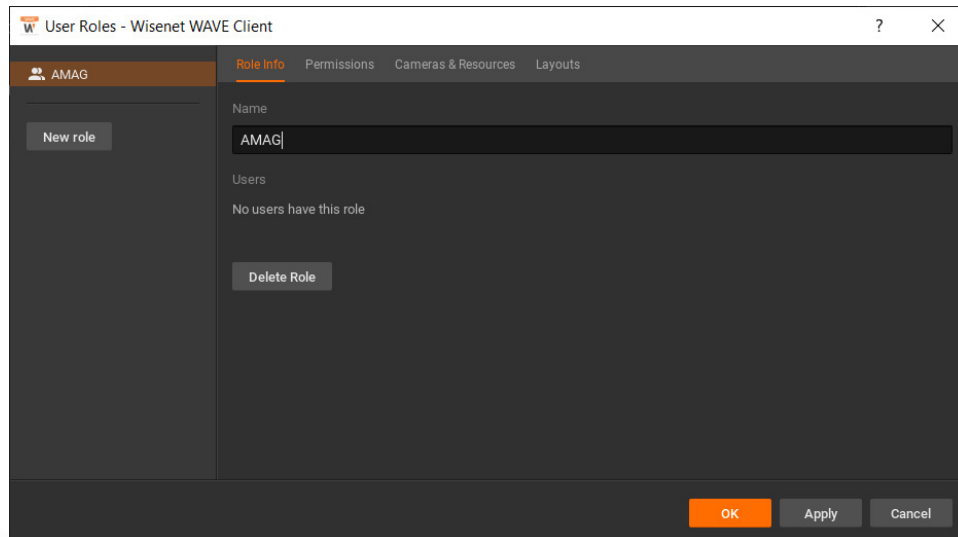
- 1 Create a new user in Wisenet WAVE through your Wisenet WAVE client. ( In this example, we created a user called "amag". )
- 2 For Role, select "Edit Roles".

The screenshot shows a 'New User...' dialog box from the Wisenet WAVE Client. The dialog is titled 'New User... - Wisenet WAVE Client' and has a dark gray background. It contains a 'User Information' section with the following fields: 'Login' (filled with 'amag'), 'Name' (empty), 'Email' (empty), 'Password' (filled with dots, with a green 'GOOD' status indicator and an eye icon), and 'Confirm Password' (filled with dots, with an eye icon). Below these fields is a 'Role' dropdown menu set to 'Live Viewer' with an upward arrow, and an 'Edit Roles...' button. At the bottom of the dialog, there is an 'Enabled' toggle switch (currently on), and 'OK' and 'Cancel' buttons.

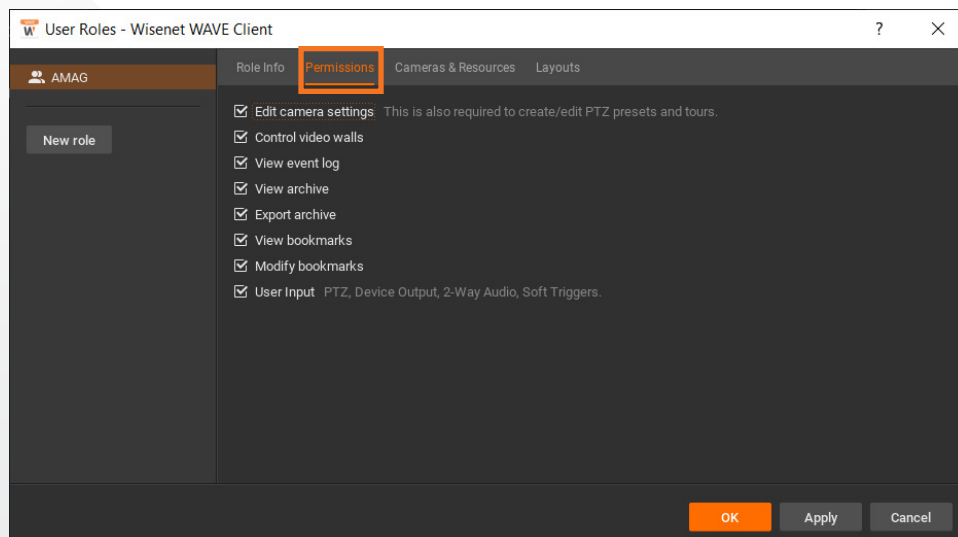
3 Click on "New role".



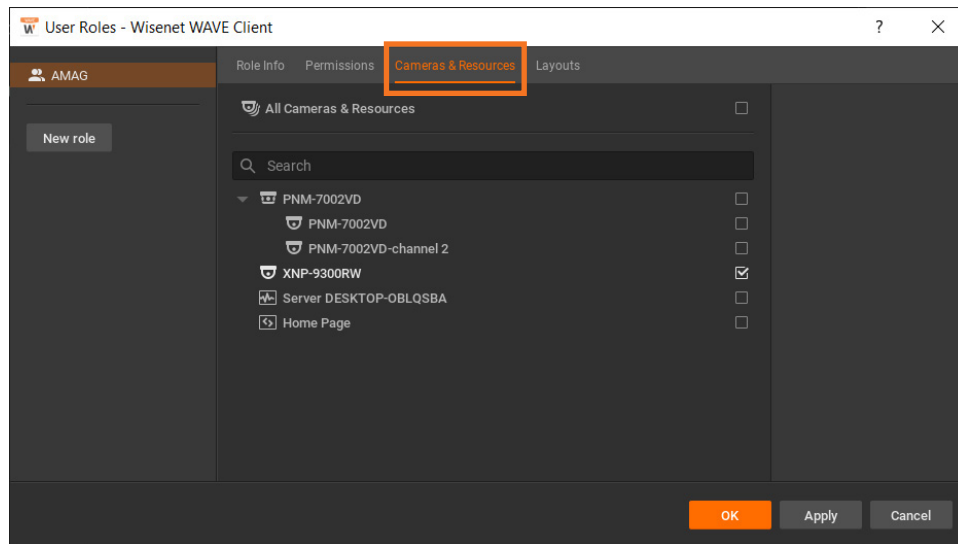
4 Give the new role a name. ( In this example we named it "AMAG". )



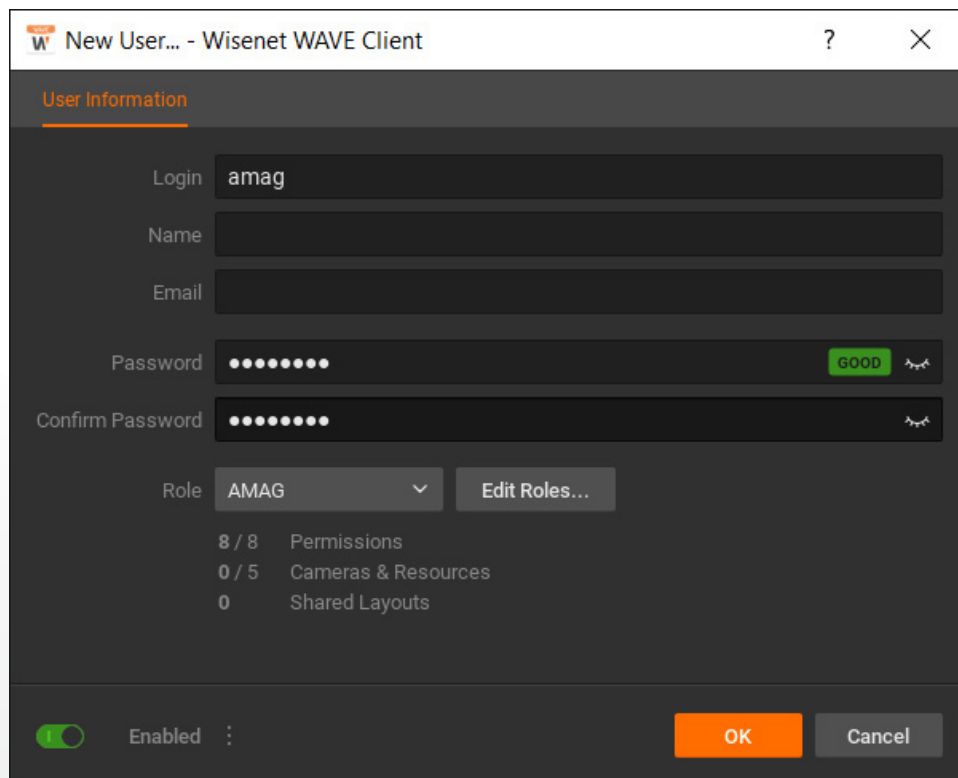
5 Under the "Permissions" tab, enable all available check boxes.



- 6 Under the "Cameras & Resources" tab, select the cameras that you would like to integrate into Symmetry.



- 7 Click "OK" to save the new Role and exit the setup window, returning you to the "New User" window.
- 8 Select the role you have just created as your user role.



- 9 Click on the popup menu ( denoted by three dots ) in the lower left corner of the window and selct "Allow digest authentication for this user" ( This is needed in order to properly view video in Symmetry. )

User Settings - amag - Wisenet WAVE Client

User Information

Login: amag

Name:

Email:

Password:

Confirm Password:

Role: AMAG Edit Roles...

8 / 8	Permissions
1 / 5	Cameras & Resources
0	Shared Layouts

Enabled [Three dots menu icon] OK Apply Cancel

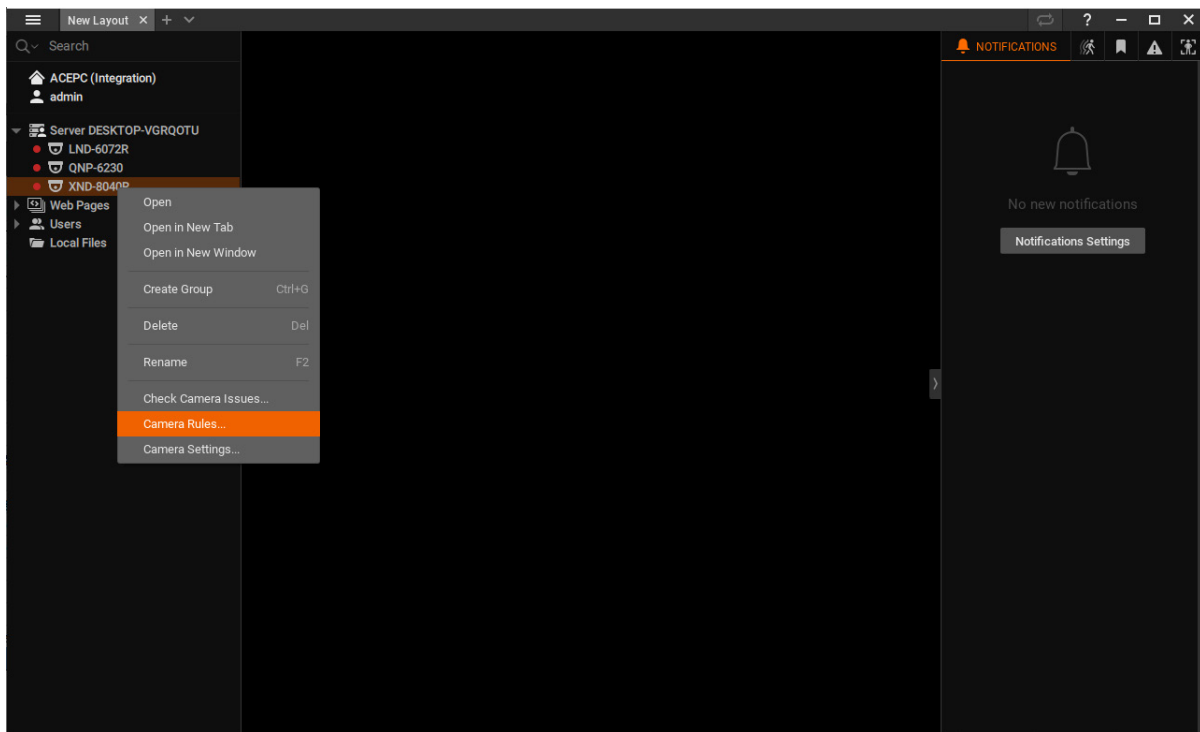
Allow digest authentication for this user

- 10 If prompted, reenter the password for this user and click "OK" when done.

## Configuring Camera Events in Wisenet WAVE VMS for Use with Symmetry

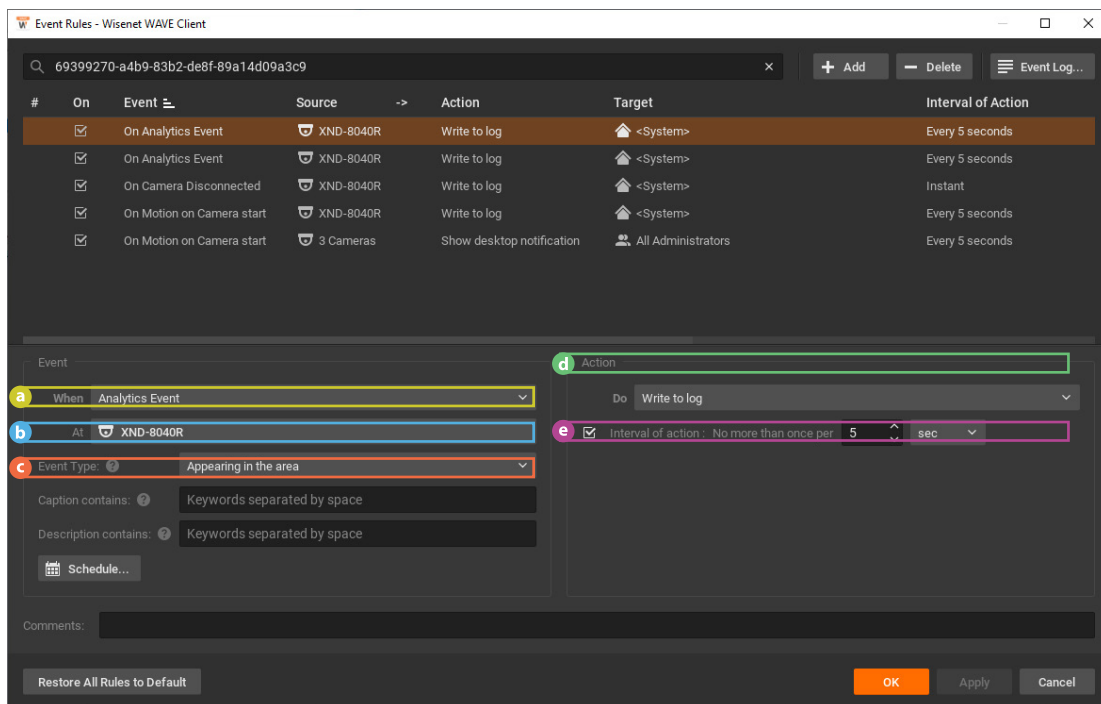
Cameras registered to your Wisenet WAVE system must be configured to send camera events and information to an integrated Symmetry system. It is recommended that you log into Wisenet WAVE VMS using an administrator account when configuring camera settings.

- 1 In the Wisenet WAVE client, right-click the camera that will generate the event to be sent to Symmetry, and select "Camera Rules" from the menu.

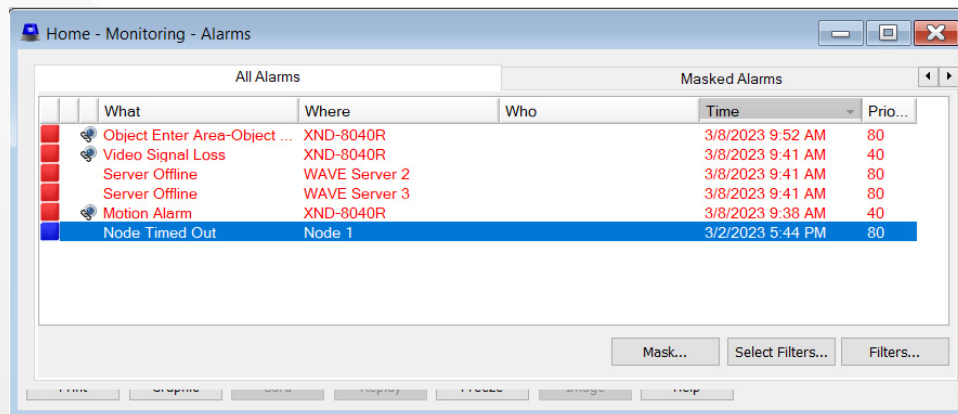


## 2 Edit the appropriate fields to create the event:

- a** **When:** the event category to be configured
- b** **At:** the camera(s) that will trigger the event
- c** **Event Type:** the event type to be triggered (Note: not all events listed under "When" will list an event here).
- d** **Action:** set to "Write to log."
- e** **Interval of action:** set this to dictate how often the event will be written to the log (and be sent to Symmetry). Example: if set to 5 seconds, if an event is triggered more than once in 5 seconds, it will only be written to the log once.



## 3 When this event is triggered, it will now be seen in the AMAG Symmetry client.



## Plugin Licensing

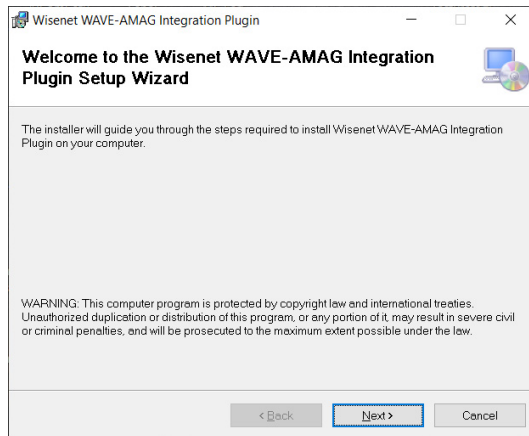
License validation is handled through the HVA License Manager service running on your AMAG Symmetry Server. In order to use the AMAG Integration Plugin for Wisenet WAVE VMS, please ensure that your user license has been validated for use with the target system.

For more information regarding the installation and use of the HVA License Manager, please refer to the HVA License Manager user manual, found at [www.HanwhaVisionAmerica.com](http://www.HanwhaVisionAmerica.com).

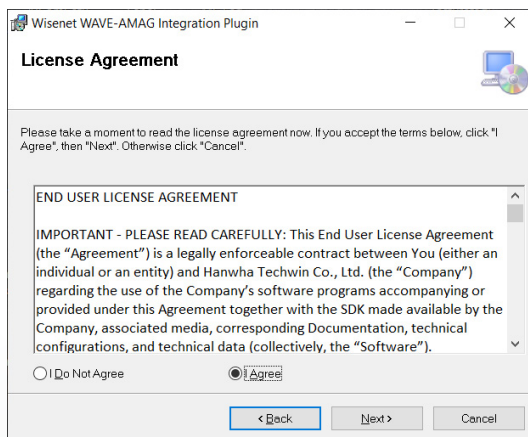
## Section 2: Adding your Wisenet WAVE system to Symmetry Access Control software

### Installing the AMAG Integration Plugin for Wisenet WAVE VMS

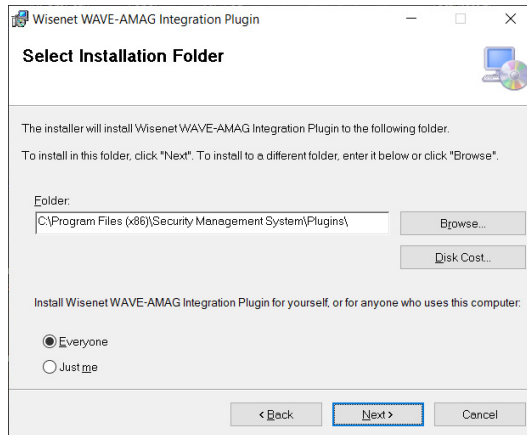
- 1 Run the Setup.exe file and click "Next".



- 2 Agree to the End User License Agreement by selecting "I Agree" then click "Next".

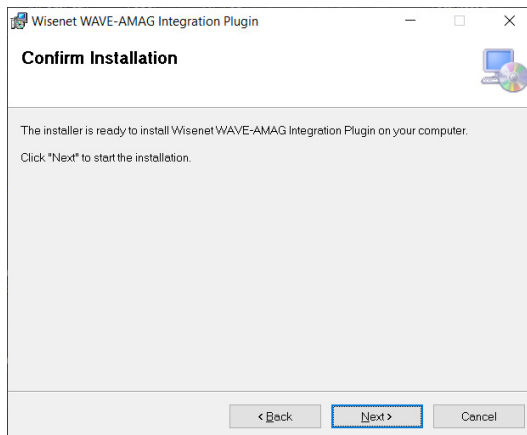


3 Verify the installation path for the plugin and click "Next".

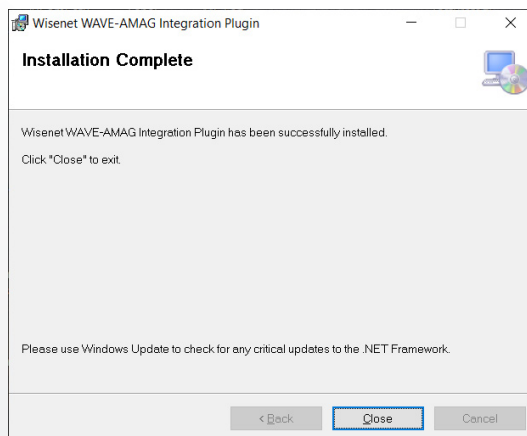


\* Note that the default installation folder is the Plugins folder for Symmetry. This should not be changed.

4 Click "Next" to begin the plugin installation.



5 Once installation is complete, click "Close".

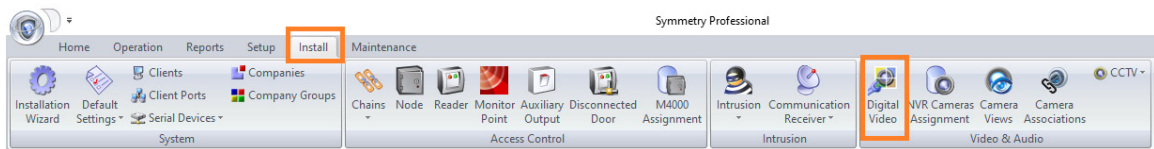


## Adding a Wisenet WAVE Server to Symmetry Access Control Center

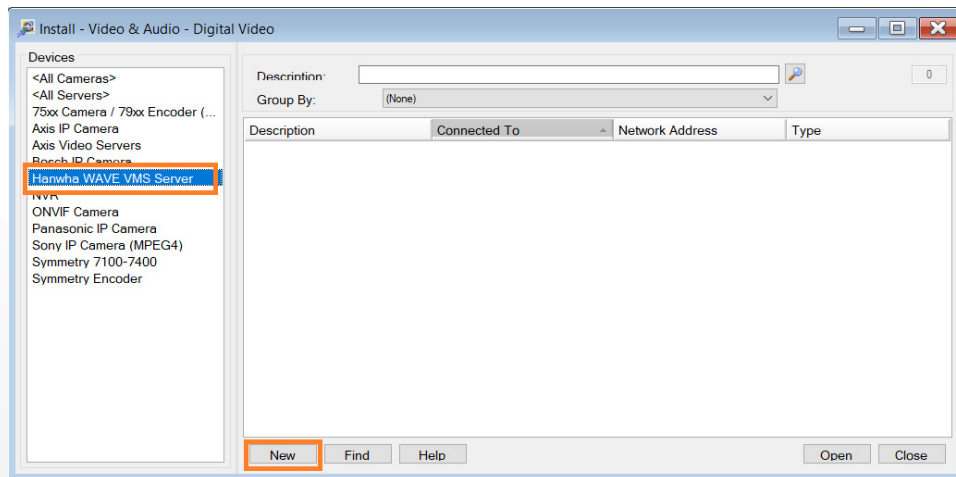
- 1 Log into Symmetry with "INSTALLER" as the user name



- 2 Select "Digital Video" under the "Install" menu



- 3 Select "Hanwha WAVE VMS Server" from the options and click "New".



- 4 Complete the fields appropriate to your Wisenet WAVE VMS server:
  - a **Description:** Allows you to provide a name or description of the Wisenet WAVE server being added.
  - b **Network Address:** Provide the IP address and port number of the Wisenet WAVE server being added.
    - Default port for Wisenet WAVE server is 7001.
  - c **Username:** Input the user previously created on page 2.
  - d **Password:** Provide the password for the above Wisenet WAVE user.
  - e **Import Cameras:** This box must be checked for cameras within the Wisenet WAVE server to be brought into, and listed in, the Symmetry Access Control software.
  - f **Reporting tab:** Check the enabled box if you would like Symmetry to receive General Events from WAVE.

Install - Digital Video Device - Hanwha WAVE VMS Server

a Description:

b Network Address:

c Username:

d Password:

Connect

Owned by Company:

e Import Cameras ☐

Location:

Category:

License Management

f Reporting



Transaction Reporting

Description	Disabled	Enabled
General Event	<input checked="" type="checkbox"/>	<input type="checkbox"/>
Server Offline	<input type="checkbox"/>	<input type="checkbox"/>
Server Online	<input type="checkbox"/>	<input checked="" type="checkbox"/>
Storage Failure	<input type="checkbox"/>	<input checked="" type="checkbox"/>

☒ Enable Offline Monitoring (Cameras must be assigned to an NVR for Offline Monitoring Alarms)

Interval (secs):

Delete Notes Help Save Cancel

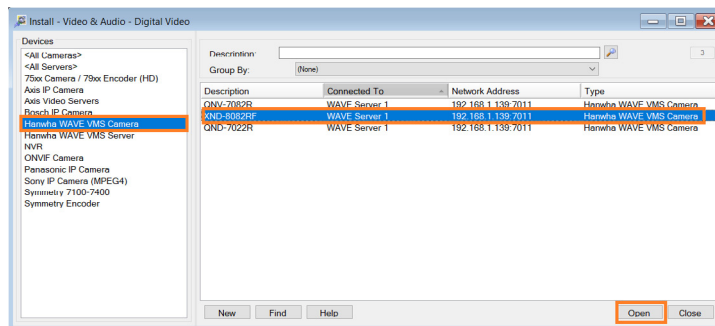
- Once all the information is verified, click "Connect".
  - Upon successful connection, the red Offline icon  will change to a green Online icon .
- Press "Save" to save these settings and close the dialogue box.

## Wisenet WAVE Server Cameras: Camera Configuration and Event Reporting

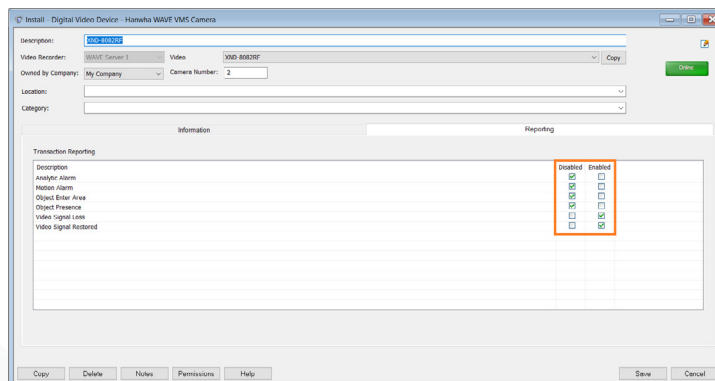
Once a Wisenet WAVE server is successfully added to your Symmetry system, a new entry will be available in your "Devices" list labeled "Hanwha WAVE VMS Camera". All cameras attached to the added Wisenet WAVE server will be listed here in this section. This section will go over the required configuration settings needed in order for Symmetry to receive events from these cameras.

### Configuring Camera Event Reporting

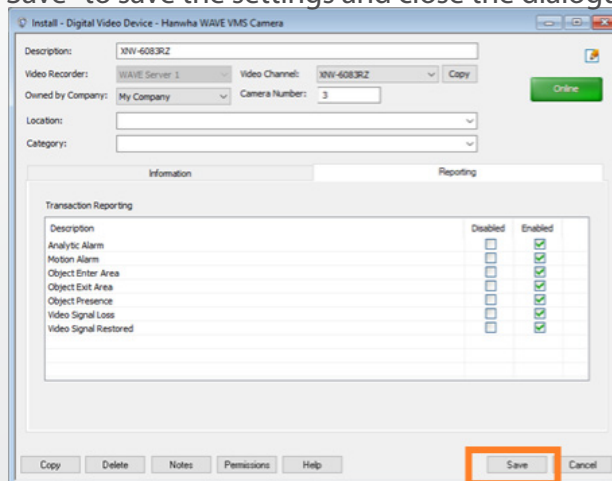
- 1 Select a camera in the "Hanwha WAVE VMS Camera" device list and click "Open" to access that camera's reporting settings.



- 2 Select "Reporting" tab within the camera settings and check the "Enabled" box for any camera event you want to have sent to Symmetry.



- 3 Click "Save" to save the settings and close the dialogue box.

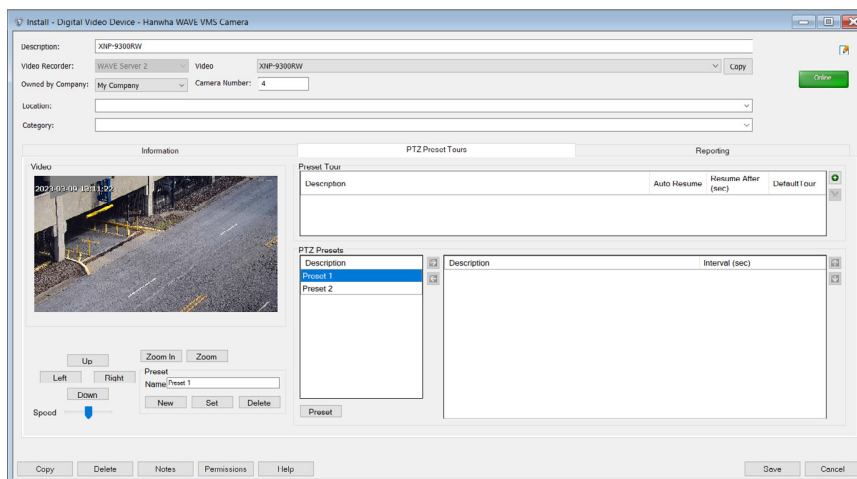


## Configuring PTZ Camera Presets and Tours

Configuration panes for PTZ cameras attached to your Wisenet WAVE server will contain an additional "PTZ Preset Tours" tab. Any preconfigured presets for the selected PTZ camera will be listed here and can be set as a tour in Symmetry. You can also create new presets that will be saved to the camera on your Wisenet WAVE system.

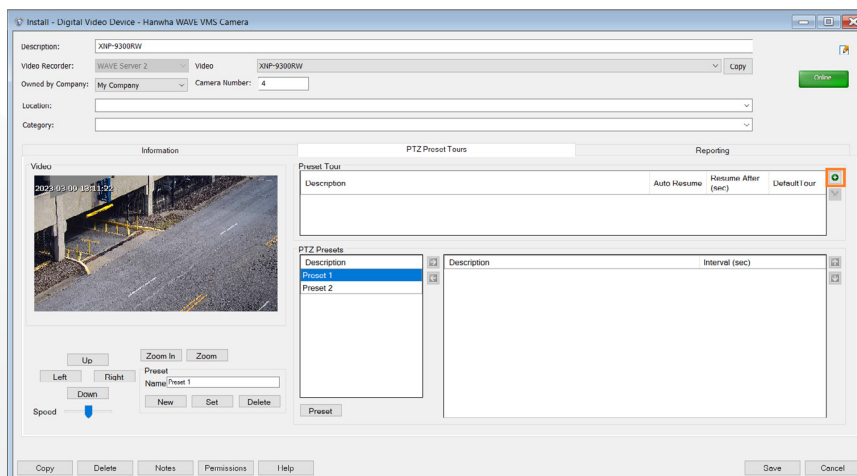
### To Create a Preset in Symmetry:

- 1 Use the Up, Down, Left, and Right buttons to move the camera to the position to be saved.
- 2 Click on New and enter a name for this new preset.
- 3 Click Set to save this preset. It will not be seen in the PTZ Presets section.

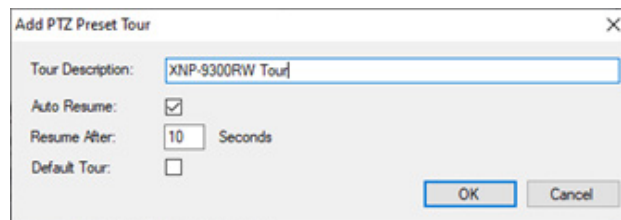


### To Setup a Preset Tour for a PTZ camera:

- 1 Click the green "+" under "Preset Tour".



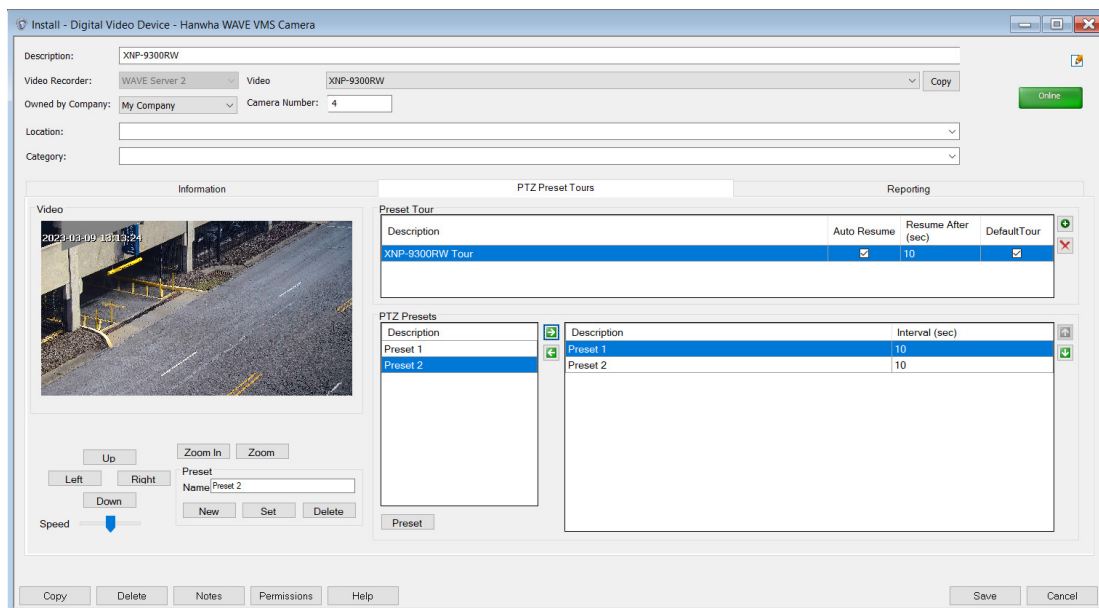
- 2 Enter a description or name for the tour, whether or not to auto resume the tour, set a timeout for resuming a tour, and if this is the camera's default tour then click "OK".



The dialog box titled "Add PTZ Preset Tour" contains the following fields and controls:

- Tour Description:
- Auto Resume: ☒
- Resume After:  Seconds
- Default Tour: ☐
- Buttons: OK, Cancel

- 3 Move the preset that will be part of this tour from the PTZ Preset section using the green arrows. Set the time to stay at this position under the interval column.



The main configuration window for the Hanwha WAVE VMS Camera shows the following sections:

- Information:** Description (XNP-9300RW), Video Recorder (WAVE Server 2), Video (XNP-9300RW), Owned by Company (My Company), Camera Number (4), Location, Category.
- Video:** Live video feed showing a street scene.
- PTZ Preset Tours:** A table with columns: Description, Auto Resume, Resume After (sec), Default Tour.
- PTZ Presets:** A table with columns: Description, Interval (sec).
- Reporting:** Empty table.
- Controls:** Up, Down, Left, Right, Zoom In, Zoom Out, Preset Name (Preset 2), New, Set, Delete, Speed slider.
- Buttons:** Copy, Delete, Notes, Permissions, Help, Save, Cancel.

- 4 When finished, click "Save" to save the setting and close the camera pane.

## Plugin Limitations

When using the AMAG Integration Plugin for Wisenet WAVE VMS, the number of video streams that can be viewed simultaneously will vary. When viewing higher resolution video streams through the AMAG Symmetry Client, the maximum number of simultaneously viewed video streams will be reduced. Test bench results can be found below.

### Test Bench Results:

Video Stream Resolution	Simultaneous Video Streams
4k resolution	± 4 streams
5MP resolution	± 6 streams
2MP resolution	± 9 streams

### Test Bench Specifications:

- OS: Win10
- CPU: i7-1165G7 @ 2.80GHz
- RAM: 16GB

For more information visit us at  
**HanwhaVisionAmerica.com**



**Hanwha Vision America**

500 Frank W. Burr Blvd. Suite 43 Teaneck, NJ 07666

Toll Free : +1.877.213.1222

Direct : +1.201.325.6920

Fax : +1.201.373.0124

[www.HanwhaVisionAmerica.com](http://www.HanwhaVisionAmerica.com)

© 2023 Hanwha Vision Co., Ltd. All rights reserved.

DESIGN AND SPECIFICATIONS ARE SUBJECT TO CHANGE WITHOUT NOTICE

Under no circumstances, this document shall be reproduced, distributed or changed, partially or wholly, without formal authorization of Hanwha Vision Co., Ltd.

\* Wisenet is the proprietary brand of Hanwha Vision, formerly known as Hanwha Techwin.