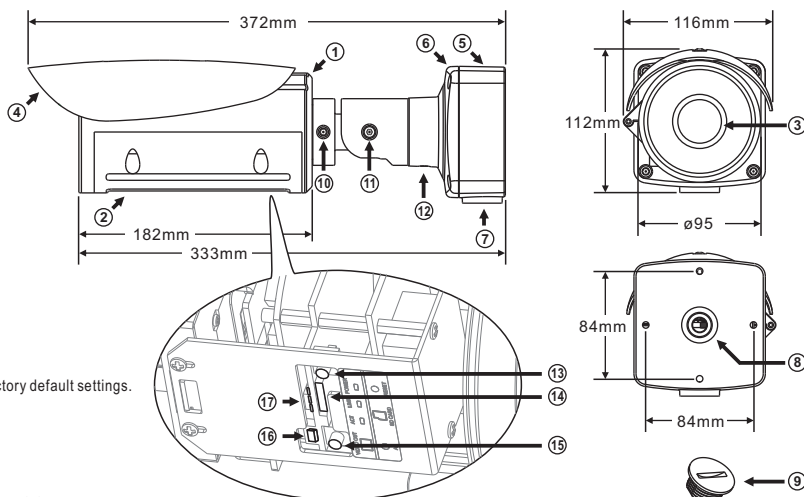




Warning: Do not throw your product in municipal waste. This product has been designed to enable proper reuse of parts and recycling. The symbol of the crossed out wheeled bin indicates that the product (electrical and electronic equipment) should not be placed in municipal waste. Check local regulation for disposal of electronics products.

Part Description & Dimensions

- ① Top Case
- ② Bottom Case
- ③ Lens
- ④ Sun Shield
- ⑤ Bottom Box
- ⑥ Top Box
- ⑦ Side Hole
- ⑧ Bottom Hole
- ⑨ Hole Plug
- ⑩ Adjustment Screw A
- ⑪ Adjustment Screw B
- ⑫ Adjustment Screw C
- ⑬ Factory default button
- ⑭ Restores the server back to factory default settings.
- ⑮ Micro SD card slot
- ⑯ Auto Focus button
- ⑰ Live Video Output Connector
- ⑱ LED Indicators



Green (Power): Indicates system status.

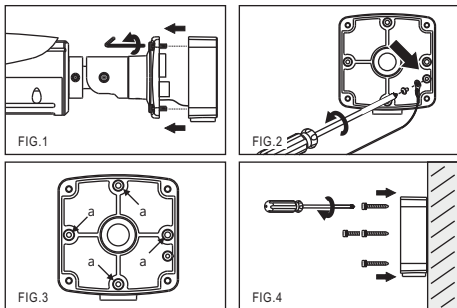
Green (Link): Illuminates when the camera is connected to a network

Orange (ACT): Flashes when data communication is in process.

The IP camera will automatically adjust the camera lens to obtain focus after press the AF (Auto Focus) button continuously for 2 seconds. User can adjust the image view by using zoom in/out button via web access, and refocus using the Auto-Focus link on the main Web page.

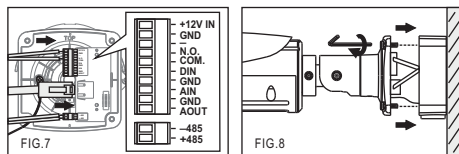
Installation

1. Retrieve the camera and remove the bottom box from the top box with a hex key (FIG.1), and remove the safety cable on the bottom box (FIG.2). Use the included screws (M4.0x25) through the holes marked as "a", and fix the camera in the desired location(FIG.3&4).

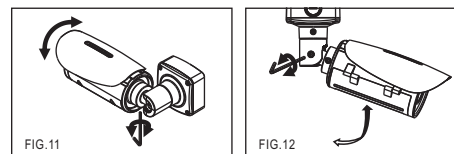
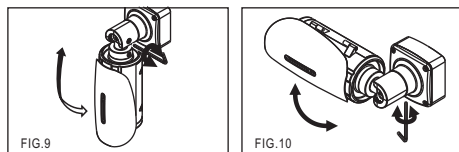


2. Firstly, insert the network cable and power cable through a pipe with 1/2" PT, and then secure the pipe to the side hole or bottom hole (FIG.5. please make sure the connection between the pipe and the side hole is watertight, and the side hole is facing downwards). To prevent the camera from falling, you should secure the safety cable(FIG.6).

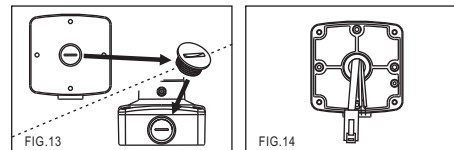
3. Connect the network cable and power cable to the camera's RJ-45 connector and power input, respectively (FIG.7). Secure the top box to the bottom box (FIG.8).



4. Adjust the three adjustment screws to move the camera to the desired angle, and then tighten the adjustment screws (FIG.9-12).



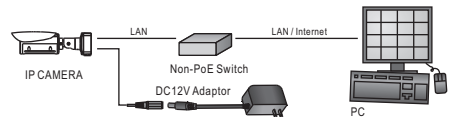
- Change the Outlet Position for the Network Cable and Power Cable
1. Loosen the hole plug on the bottom box and secure it to the side hole (FIG.13).
 - 2.Insert the network cable and power cable through bottom hole on the bottom box (FIG.14), and then connect the network cable and power cable to the camera's RJ-45 connector and power input, respectively (FIG.7). For watertight installation, please refer to **Installation-2**.



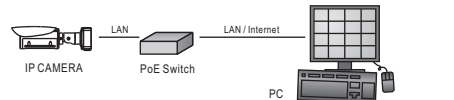
System Architectures

For connecting IP Camera series to the network, please follow one of the system architectures:

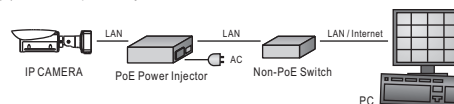
- (1). Use DC12V power adaptor and network switch connected to a network.



- (2). Use with PoE of the network switch connected to the network.



- (3). Use PoE power injector and the network switch connected to the network.



Emergency Factory Default

To restore the hardware to factory default settings, please follow these steps:

- 1.Press and hold "RESET Key" for 10 seconds and release.
- 2.Wait for about 40 seconds, and the network LED light should turn off, and go back on again.
- 3.The camera is now restored to factory default settings, and will reboot automatically.
- 4.Search for the IP device using the IPScan software.
- 5.Start the IP device via an Internet browser.
- 6.Enter the username and password to operate.

NOTE1: The factory default username and password are empty, and the user can set an account for login.

NOTE2: The IP address will revert to the default setting of 192.168.0.200.

Note: This equipment has been tested and found to comply with the limits for a Class B digital device, pursuant to part 15 of the FCC Rules. These limits are designed to provide reasonable protection against harmful interference in a residential installation. This equipment generates, uses and can radiate radio frequency energy and, if not installed and used in accordance with the instructions, may cause harmful interference to radio communications. However, there is no guarantee that interference will not occur in a particular installation. If this equipment does cause harmful interference to radio or television reception, which can be determined by turning the equipment off and on, the user is encouraged to try to correct the interference by one or more of the following measures:

- Reorient or relocate the receiving antenna.
- Connect the equipment into an outlet on a circuit different from that to which the receiver is connected.
- Increase the separation between the equipment and receiver.
- Consult the dealer or an experienced radio/TV technician for help.

Before Accessing IP Cameras

Before accessing the IP camera, make sure that the camera's RJ-45 network, audio, and power cables are properly connected. To set the IP address, consult your network administrator for an available IP address. The default IP address for each IP camera is 192.168.0.200. Users can use the default IP address for verifying the camera's network connection.

Configuring IP Addresses via Web Interface

To change an IP address via web interface, type the default IP address (192.168.0.200) in the Internet browser and follow the steps below:

1. Login to the Full HD IP camera with the set username and password.
2. Click **Basic Mode** configuration hyperlink.
3. Click **Network->General** hyperlink.
4. Change the IP address, subnet mask, gateway, or HTTP port for the IP camera.
5. Click **Submit** to verify the settings.

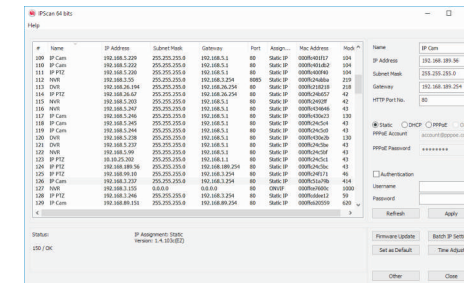
Software Requirements

Universal ActiveX software components are required for web interface display of JPEG or Full HD video. When you login to the IP camera by Internet Explorer, the security warning dialog box will prompt the installation of the Universal ActiveX. Click **Install** to download it.

Configuring IP Addresses with IPScan Software

To change the settings of the IP address, subnet mask, gateway, or HTTP port, you can follow the steps below:

1. Run the IPScan software.
2. Click **Refresh**. All available devices should be listed in the device list.
3. Select your device from the list provided.
4. Change the IP address, subnet mask, gateway, or HTTP port for the IP camera.
5. Click **Apply** to submit the settings.
6. Click **Refresh** to verify the settings.



Login

The factory default username and password are empty. To login to the Full HD IP camera, please set the username and password on the login page. Press [Login] to complete the setting and login simultaneously.



Password have to meet the following criteria:

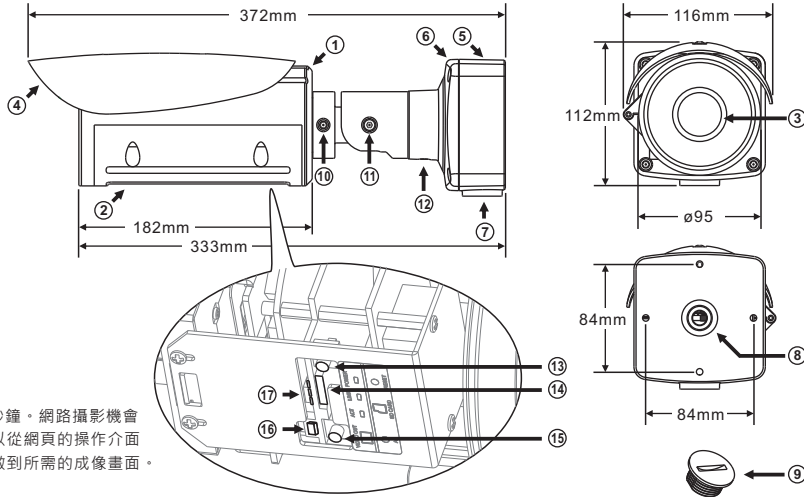
1. More than or equal to 8 characters.
2. Allow uppercase letter, lowercase letter, number digit, and special character.
3. Must have at least three types of character sets.

日夜兩用高畫質自動變焦紅外線網路攝影機

安裝說明

部件說明及尺寸

- ① 上蓋
- ② 下蓋
- ③ 鏡頭
- ④ 遮陽罩
- ⑤ 接線盒底座
- ⑥ 接線盒上蓋
- ⑦ 側孔
- ⑧ 底孔
- ⑨ 孔塞
- ⑩ 調整螺絲 A
- ⑪ 調整螺絲 B
- ⑫ 調整螺絲 C
- ⑬ 回復工廠預設值按鍵
- ⑭ Micro SD卡插槽
- ⑮ AF自動對焦按鍵



按下自動對焦 (AF) 鍵 2 秒鐘。網路攝影機會執行自動對焦功能。也可以從網頁的操作介面調整鏡頭的焦距、放大倍數到所需的成像畫面。

⑮ 影像輸出連接座

⑯ 指示燈

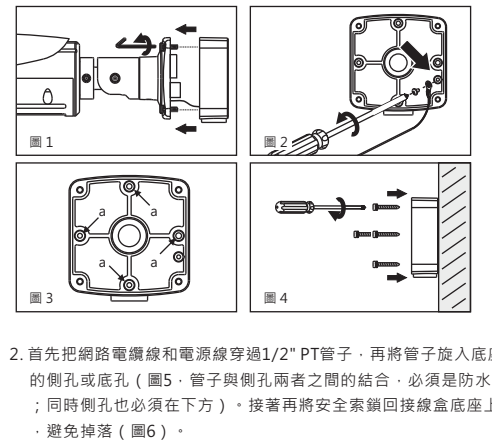
綠色 (POWER 燈號)：系統狀態顯示

綠色 (LINK 燈號)：網路線接上時，此 LED 恆亮。

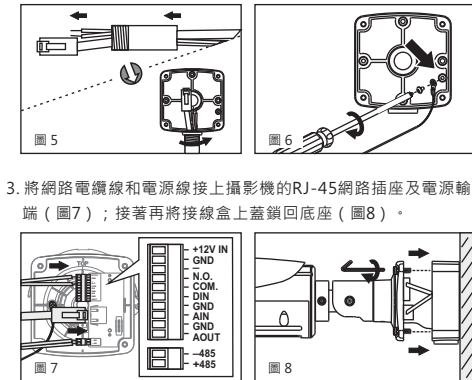
橙色 (ACT 燈號)：資料通訊時，此 LED 閃爍。

安裝

1. 首先取出網路攝影機，使用六角板手將接線盒底座與上蓋分開 (圖1)；再將底座上的安全索拆下 (圖2)。

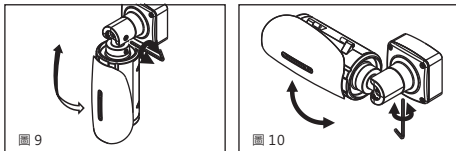


2. 首先把網路電纜線和電源線穿過 1/2" PT 管子，再將管子旋入底座上的側孔或底孔 (圖5，管子與側孔兩者之間的結合，必須是防水的；同時側孔也必須在下方)。接著再將安全索鎖回接線盒底座上，避免掉落 (圖6)。

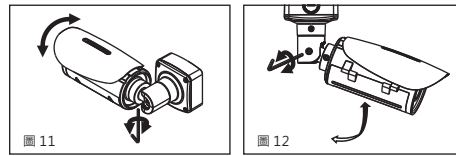


3. 將網路電纜線和電源線接上攝影機的 RJ-45 網路插座及電源輸入端 (圖7)；接著再將接線盒上蓋鎖回底座 (圖8)。

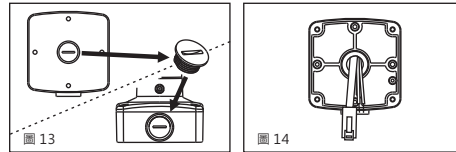
4. 依需求調整腳架上的三個調整螺絲，轉動攝影機主體到所需的攝影角度後，再將其調整螺絲鎖緊 (圖9~12)。



警語：此圖示，指在廢棄產品時不可直接丟棄垃圾桶，應進行拆解，並分類進行回收再利用。

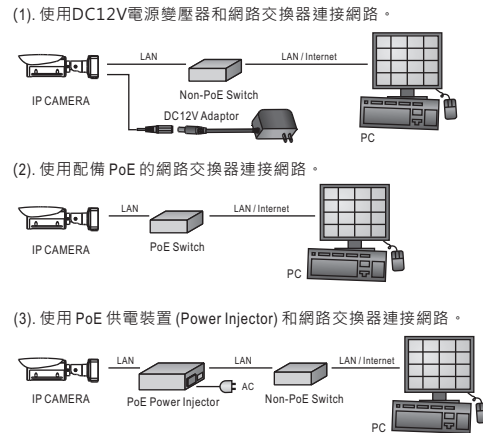


- 變更網路電纜線和電源線的出線位置
1. 轉鬆取下接線盒底座的孔塞，再將其鎖緊在側孔上。(圖13)。
 2. 把網路電纜線和電源線穿過接線盒底座的底孔 (圖14)，然後將其連接到攝影機的 RJ-45 網路插座及電源輸入端 (圖7)。防水安裝請參閱第2項的說明。



系統架構

請依據下列其中一種系統架構，連結高畫質網路攝影機和您的網路。



安裝前準備

在使用 Full HD IP 攝影機之前，請先確認攝影機 RJ-45 網路接頭和電源接頭是否接妥，並請網管人員提供一組未經使用的 IP 位址。出廠預設 IP 位址為 192.168.0.200，使用者可以先行使用該 IP 位址去更改相關網路設定。

回復出廠預設值

- 使用硬體來回復出廠預設值，請按照下列步驟：
1. 按住「回復出廠預設值按鍵」10 秒鐘。
 2. 約 40 秒鐘後網路連接 LED 燈將熄滅再點亮。
 3. 網路伺服器將重新開機。
 4. 使用 IPScan 軟體搜尋此 IP 設備。
 5. 使用網路瀏覽器開啟此 IP 設備。
 6. 輸入預設使用者名稱及密碼進行操作。
- 註1：出廠預設的使用者名稱和密碼為空白，由使用者自行設定輸入。
- 註2：為方便使用者起見，回復出廠預設值會回復到預設 IP 位址 192.168.0.200。

軟體需求

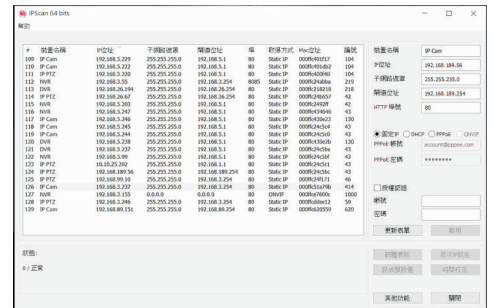
Full HD 網路攝影機需要軟體解壓縮器顯示影像，Full HD 網路攝影機的網頁介面需使用該軟體。當您第一次登錄本產品，Full HD 網路攝影機的網頁介面會自動安裝 Universal ActiveX 元件，請按下「安裝」鍵安裝該元件。

使用 HTML 頁面來設定 IP 位址

- 請先在網路瀏覽器網址列，輸入預設 IP 位址 192.168.0.200，並按照下列步驟執行，使用 HTML 頁面來更改 IP 位址：
1. 設定使用者名稱及密碼，登錄 Full HD IP 攝影機
 2. 按「組態設定」超連結
 3. 按「網路設定」「一般設定」超連結
 4. 輸入或修改 IP 位址、子網路遮罩、網路閘道 (Gateway) 或 HTTP 連接埠
 5. 按「確認」鍵，完成上述修改

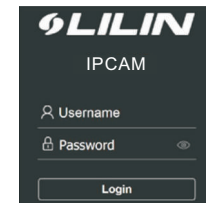
使用 IPScan 軟體工具來設定 IP 位址

- 您可以使用 IPScan (網路設備搜尋軟體) 工具來設定 IP 位址。要更改 IP 位址、子網路遮罩、網路閘道、或 HTTP 連接埠，請參照下列步驟：
1. 執行 IPScan 軟體工具
 2. 按「更新表單」鍵，區域網路內的所有設備將顯示在設備清單欄位
 3. 用滑鼠點選該設備
 4. 編輯或修改該設備之 IP 位址、子網路遮罩、網路閘道 (Gateway) 或 HTTP 連接埠等欄位
 5. 按「套用」鍵來更改該設定
 6. 按「更新表單」鍵來驗證該設定



登入

出廠預設的使用者名稱和密碼為空白。欲登入 Full HD 網路攝影機，請在登入頁面，設定使用者名稱及密碼並按下確認鍵，可同時完成使用者設定並登入。



- 密碼強度要求：
1. 密碼長度需要 8 個字以上。
 2. 密碼必須包含英文字大寫、小寫、數字及特殊符號。
 3. 密碼必須強制使用至少 3 種文字型態。