

B Series Control Panel

Installer Quick Start Guide



Use this guide to quickly install a Bosch B6512/B5512/B4512/B3512 security system. Additional information is found in the Control Panels Installation Manual.

When you see this icon, use your smart phone with a QR code reader app to view helpful videos.

For additional training:

Bosch YouTube channel:

1. Scan QR code.
2. Scroll down.
3. Locate and select your region for additional videos.

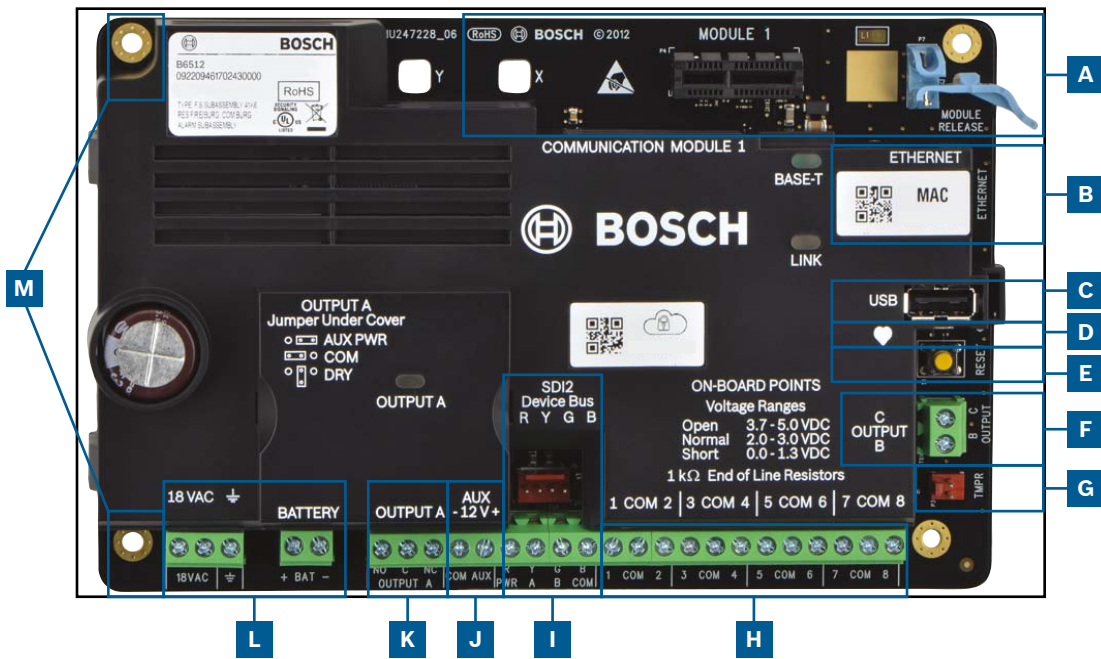
B Series Installer's Site:

(North America only)

Installation sequence:

Scan and follow these videos in sequential order to the steps listed below.

Control panel component layout



Control panel connection location

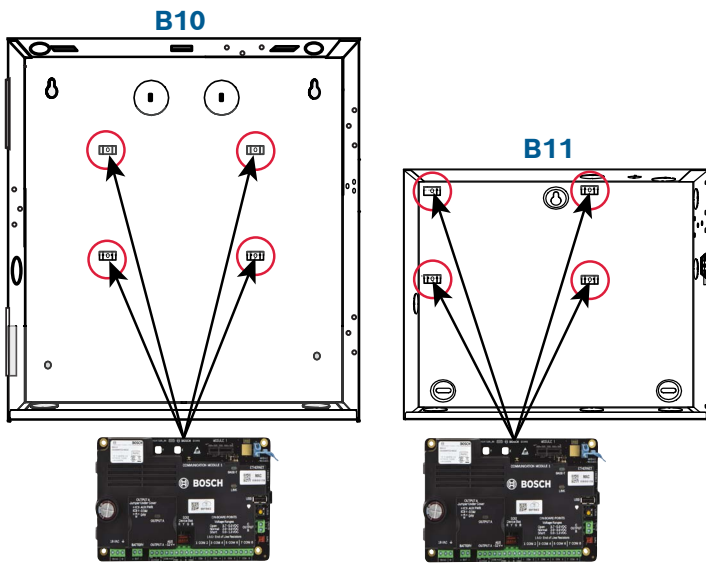
Location	Item	Description	Specification
A	MODULE 1	Plug-in comm module	Communication module options
B	ETHERNET	Ethernet port	built-in on-board Ethernet connection (10Base-T/100Base-T)
C	USB	USB port	USB connector (for firmware updates and RPS connection)
D	Heartbeat LED	Heartbeat LED	Slow=normal, rapid=service mode
E	Reset	Reset switch	Hold five seconds to enter or exit service mode
F	B C	Outputs B(2) C(3)	Open collector, 50mA, active low
G	TMPR	Tamper	Optional tamper switch connector (ICP-EZTS)
H	1 COM 2 to 7 COM 8	Alarm inputs	End Of Line (EOL) resistor supervised alarm inputs
I	R Y G B	SDI2 bus	SDI2 device bus
J	COM AUX	Aux power	12 VDC, 800mA
K	NO C NC	Output A(1)	Programmable relay output
L	+ BAT - 18 VAC, ground, 18 VAC	Battery, Earth ground, 18 VAC	Primary/Secondary power and Earth Ground connections
M	Mounting	Mounting holes	Mounting holes for control panel

Step 1 Mounting the control panel

M

Bosch tips:

- ▶ Mount the enclosure prior to mounting the control panel.
- ▶ Mount control panel into enclosure with hardware provided.

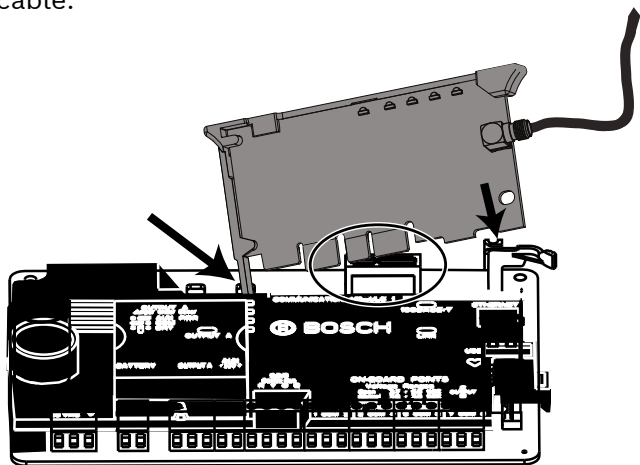


Step 2 Installing a communication module

A

Bosch tips:

- ▶ Insert leg of module into slot marked "x."
- ▶ **Cellular:** Place antenna on top of enclosure and run cable inside, then connect to module.
- ▶ **PSTN:** Connect module to a D166 (RJ31x) jack using a D161/D162 cable.

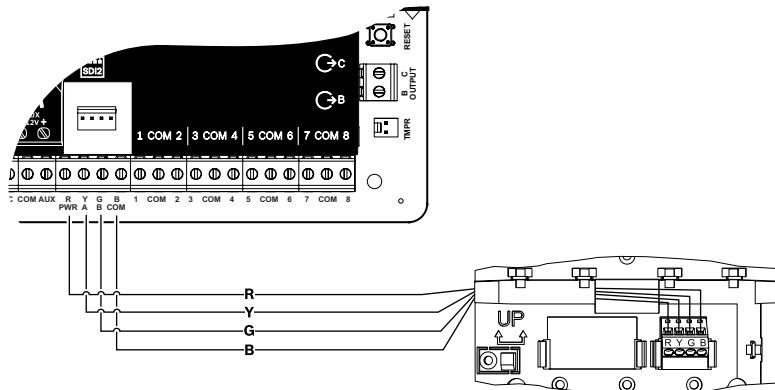


Step 3 Installing a keypad

I

Bosch tips:

- ▶ When installing a compatible Bosch keypad, refer to keypad installation guide for specific wiring diagrams. Basic keypad wiring is shown below.
- ▶ When installing more than one keypad, refer to keypad installation guide for unique address settings.

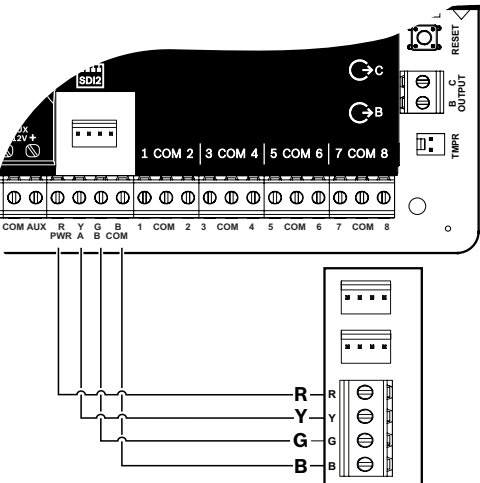


Step 4 Installing expansion modules

I

Bosch tips:

- ▶ If installing more than one device that is similar, refer to the module's installation guide for address settings (for example, two of the same device).
- ▶ If installing a RADION B810 wireless receiver, use address 1 only.

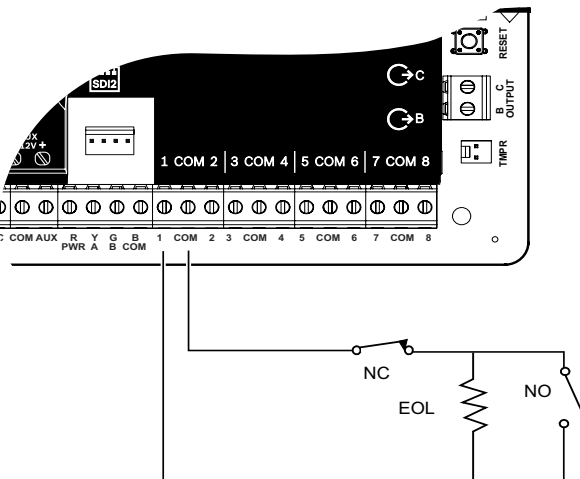


Step 5 Installing wired inputs

H

Bosch tips:

- ▶ If using a dual EOL, 2K EOL, or no EOL, refer to control panel installation guide for control panel settings.
- ▶ If using 2-wired powered devices, use a B201 or D125B.



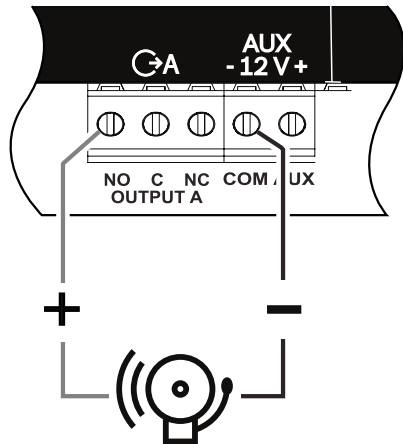
NOTE: Not all modules are available in all regions.

Step 6 Installing a bell or siren

J K

Bosch tips:

- ▶ Output A can supply up to 1 A at 12 VDC when sourced from a control panel (jumper in AUX PWR position).
- ▶ Output A can support up to 3 amps at 12 VDC when using a separate power supply (jumper in DRY position).
- ▶ Output B and C are open collectors and are limited to 50 mA at 12 VDC.

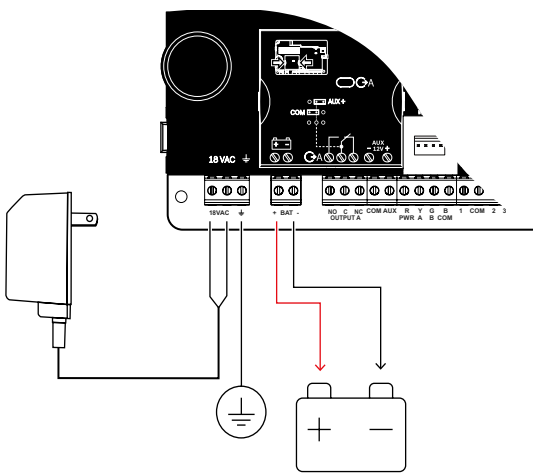


Step 7 Powering the control panel

L

Bosch tips:

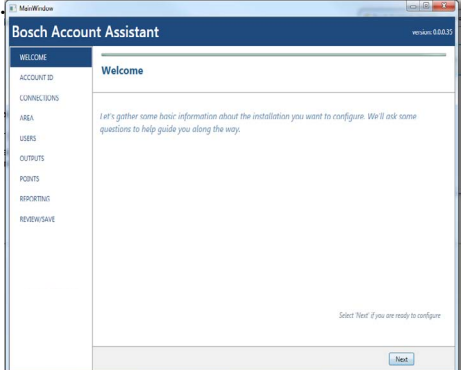
- ▶ Connect wires to control panel before applying battery or AC power.
- ▶ Connect earth ground to a cold water pipe (copper) or other solid connection to ground.



Step 8 Create panel accounts using RPS

Bosch tips:

- ▶ If configuring using the Installer Services Portal, go to **Step 11**.
- ▶ Install Remote Programming Software (RPS) v6.06 or later. You can download RPS from the RPS product page.
- ▶ Follow the RPS Account Assistant instructions to create new control panel accounts. The Account Assistant helps you create a new panel account.
- ▶ If RPS is not available, keypad programming is an option. Refer to keypad installation instructions.

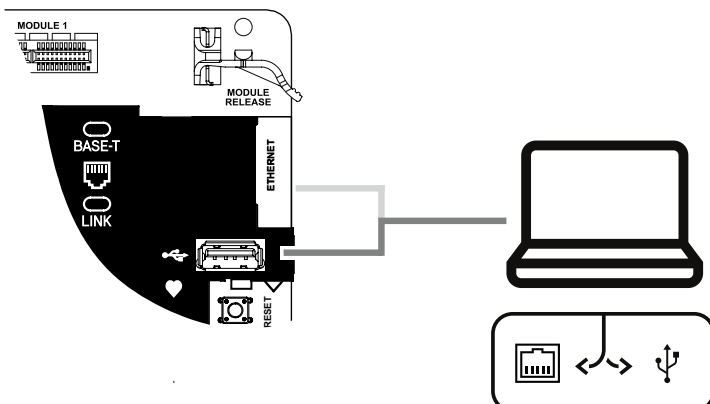


Step 9 Connecting the control panel using RPS

B C

Bosch tips:

- ▶ Connect a computer with RPS installed. Direct RPS connections can be done through a USB connection or Ethernet connection.
- ▶ The Account Assistant automatically launches when you create a new account.
- ▶ For USB direct connection, use a B99 USB cable.



2 | Specifications

Dimensions	27.8 cm x 25.9 cm x 8.32 cm (10.9 in x 10.2 in x 3.3 in)
Color	White
Compatible Lockset (optional)	D101 Lock and Key Set
Compatible Dual Tamper Switch (optional)	ICP-EZTS Tamper Switch D110 Tamper Switch
Material	0.7 mm (22 gauge) cold-rolled steel

Small Control Panel Enclosure B11



en Installation Guide



Reading Bosch Security Systems B.V. Product Date Codes

For Product Date Code information, refer to the Bosch Security Systems B.V.
Web site at: <http://www.boschsecurity.com/datecodes/>.

Bosch Security Systems B.V.

Torenallee 49
5617 BA Eindhoven
Netherlands

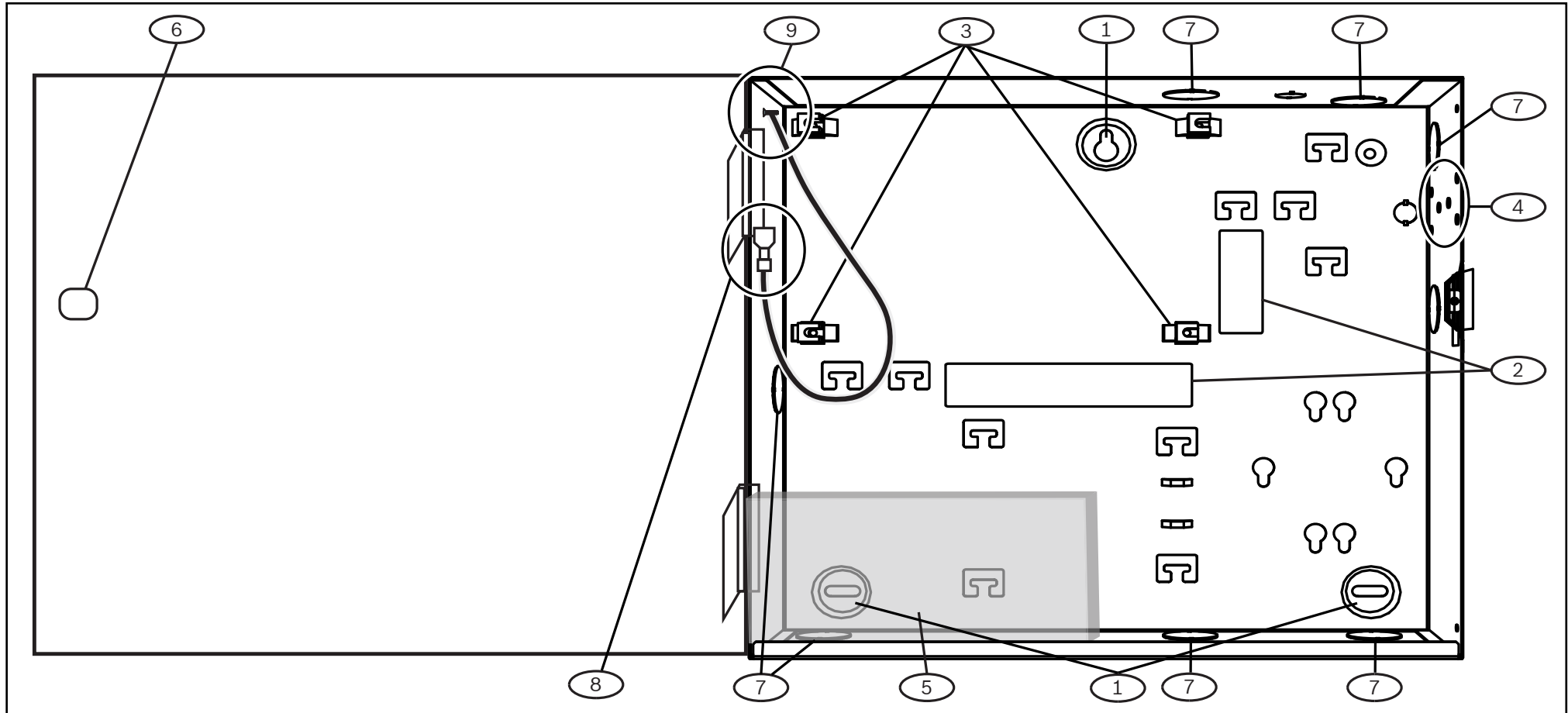
www.boschsecurity.com

© Bosch Security Systems B.V., 2019



1 | Overview

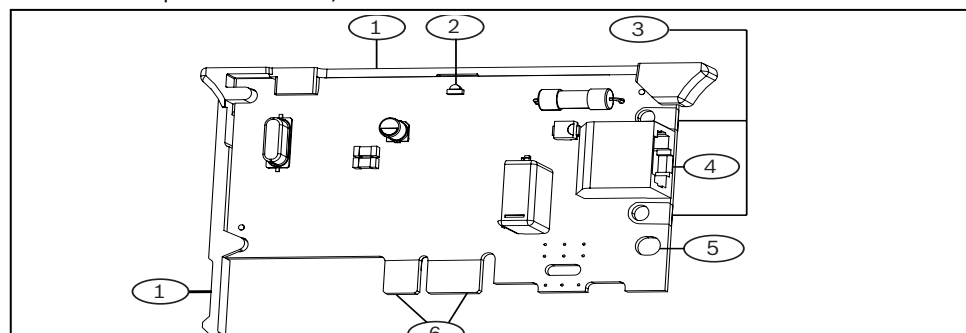
This enclosure is compatible with select Bosch intrusion products, and can hold one batteries.



Callout	Description
1	Enclosure mounting holes (3) Bosch recommends using #8 screws and wall anchors to install.
2	Wire knockouts (9)
3	Control panel mounting location
4	Tamper switch mounting location
5	Battery mounting location (size 7Ah)
6	Lockset mounting location
7	Conduit knockouts (8) 12.7 mm (1/2 in)
8	Grounding (bonding) connection to enclosure door
9	Grounding (bonding) connection for door only. Do not connect any other wires to this lug.

1 | Overview

The B430 connects to the control panel for communication over the PSTN (Public Switched Telephone Network).



Callout – Description

1 – Module handle and support leg

2 – Line seize/ring LED

3 – Test phone pads

Callout – Description

4 – RJ45 phone connector

5 – Plug-in module retention clip opening

6 – PCB metal contacts

2 | Install or remove the module

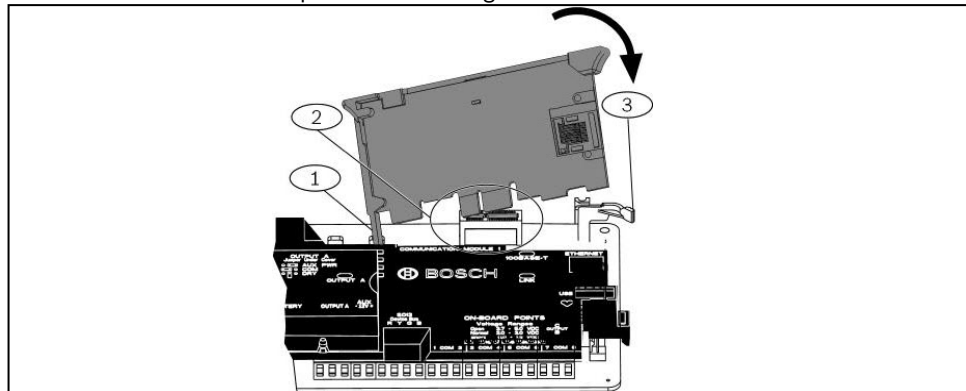


NOTICE!

Remove all power (AC and battery) before making any connections. Failure to do so might result in personal injury and/or equipment damage.

2.1 | Install the module

1. Insert the support leg into the support hole labeled X.
2. Align the PCB metal contacts with the on-board connector.
3. Push the module into place until it is tight.



Callout – Description

1 – Support leg

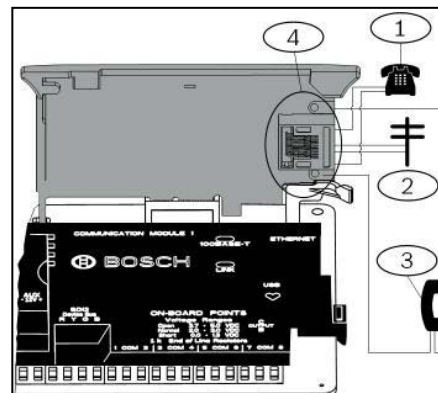
2 – PCB metal contacts

Callout – Description

3 – Plug-in module retention clip

2.2 | Wire the module

1. Connect one end of a telephone cord to the B430.
2. Connect the other end to an RJ31X or RJ38X phone jack. The module has pads on both sides of the board to connect a telephone test set. Refer to the following illustration.



Callout – Description

1 – Premises telephone

2 – Incoming Telco line

3 – Installer telephone test set

4 – RJ45 phone connector

2.3 | Remove the module

1. Open the retention clip.
2. Hold the top corners of the support handle.
3. Pull out the module.

3 | LED descriptions

Refer to the following table.

Flash pattern	Function
OFF Steady 	Standby
ON Steady 	Line seize
Flash 	Ring detect

4 | Configuration

Use Remote Programming Software (RPS) or an SDI2 keypad to program.

For programming parameter descriptions, options, and defaults refer to *RPS Help* or the *Program Entry Guide* for your control panel.